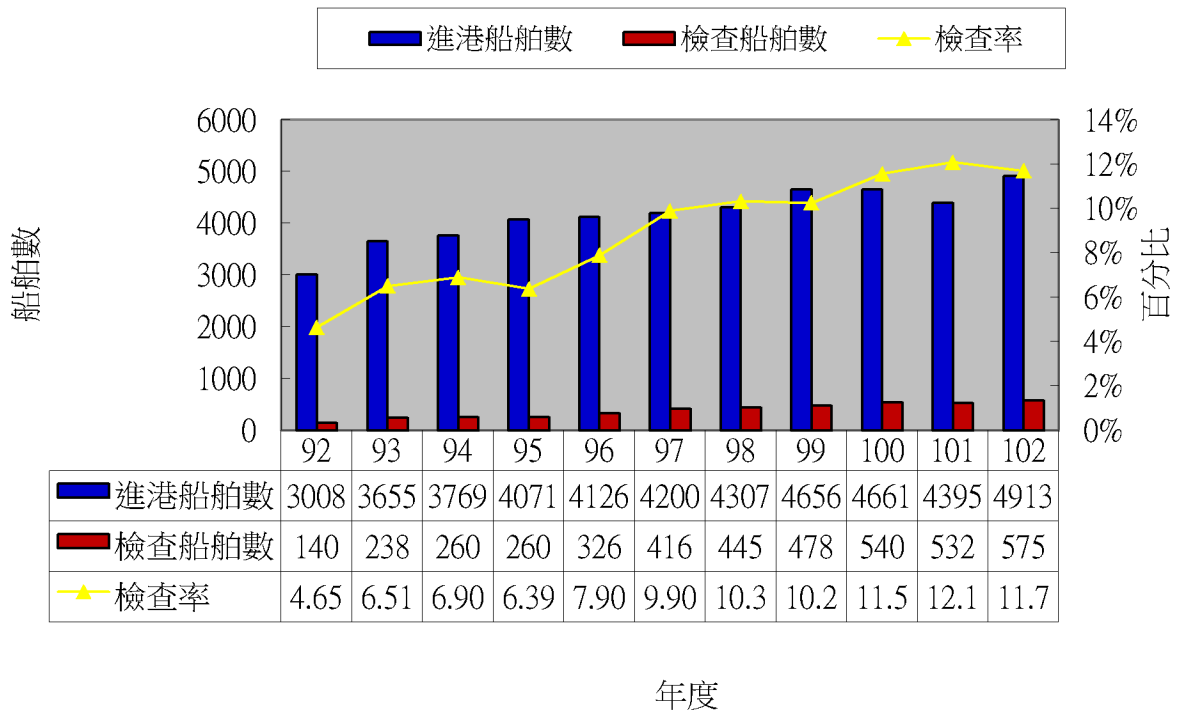
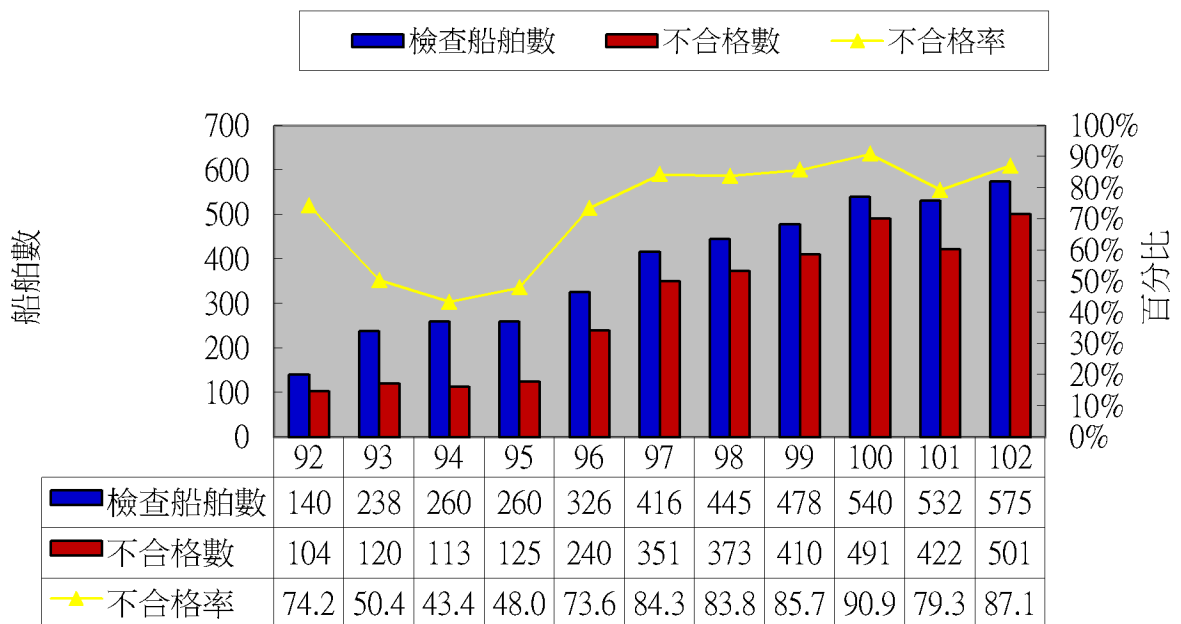


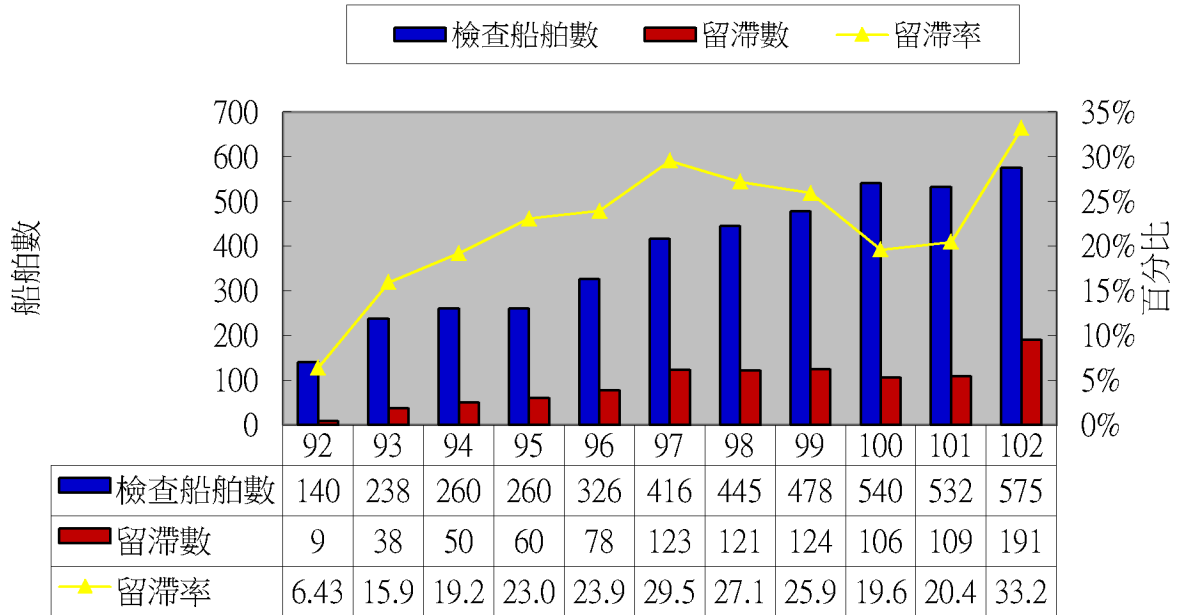
航港局執行情形統計(進港船舶數-檢查船舶數-檢查率)



航港局執行情形統計(檢查船舶數-不合格數-不合格率)



航港局中心執行情形統計(檢查船舶數-留滯數-留滯率)



92-102 歷年港口國管制檢查統計

進港船舶數		檢查船舶數	不合格船舶數	執行扣船數	檢查率	不合格率	扣船率
年度	次數 (A)	(B)	(C)	(D)	(B/A)	(C/B)	(D/B)
92	3008	140	104	9	4.65%	74.29%	6.43%
93	3655	238	120	38	6.51%	50.42%	15.97%
94	3769	260	113	50	6.90%	43.46%	19.23%
95	4071	260	125	60	6.39%	48.08%	23.08%
96	4126	326	240	78	7.90%	73.62%	23.93%
97	4200	416	351	123	9.90%	84.38%	29.57%
98	4307	445	373	121	10.33%	83.82%	27.19%
99	4656	478	410	124	10.27%	85.77%	25.94%
100	4661	540	491	106	11.59%	90.93%	19.63%
101	4395	532	422	109	12.10%	79.32%	20.49%
102	4913	575	501	191	11.7%	87.13%	33.22%