

檔 號：

保存年限：

海能風力發電股份有限公司 函

機關地址：407台中市西屯區市政北二路
282號13樓之5

承辦人：顏鈺承

電話：0909365833

Email：jensen.yan@formosa2project.com

受文者：交通部航港局中部航務中心

發文日期：中華民國113年12月9日

發文字號：能T字第2024122525號

速別：普通件

密等及解密條件或保密期限：

附件：如說明三(附件一 2024122525_Attach1.pdf、附件二 2024122525_Attach2.pdf)

主旨：海能風力發電股份有限公司陣列電纜及輸出電纜例行勘測作業之航船布告展延。

說明：

- 一、本公司日前以能T字第2024082480號函請貴單位就本公司陣列電纜及輸出電纜例行勘測作業，惠予航船布告。茲因天氣因素，該勘測作業時間需為展延，惠請貴單位就前布告予以展延。
- 二、該陣列電纜及輸出電纜例行勘測作業執行船舶本公司委由台灣離岸風場服務股份有限公司，相關船舶以本國籍船舶世通168執行，原預定作業完成時間，需由原訂之113年11月30日，展延至113年12月26日。
- 三、檢送航船與作業相關資訊如附件一及航船布告雙語版本如附件二。

正本：交通部航港局中部航務中心

副本：





FORMOSA 2

海能風力發電股份有限公司

Formosa 2 Offshore Wind Farm Project

Vessel specification and project information 船舶與作業相關資訊

<i>Author:</i>	<i>Checked:</i>	<i>Approved by:</i>
Name: Jensen Yan	Name: Bing Hsieh	Name: Li-Hung Ko
Job Title: Operations Engineer	Job Title: Operations Engineer	Job Title: Operations Manager

All information contained within this document must only be used for the purpose for which it was created. As such the information should not be used as a basis for any fabrication, construction, installation and/or operation other than as already agreed in writing by F2 without further engineering studies to validate its application. F2 cannot be held liable for the consequences of any use or misuse of the information contained within this report which exceeds its original and stated purpose. Where a particular valid Non-Disclosure Agreement exists in relation to the information contained within this document it is to be treated as strictly confidential and not to be shared with a third party without the express permission of F2.

Doc No:	N/A
Page:	1
Rev:	0
Date:	21 November 2024

REVISION RECORD SHEET

Rev	Purpose	List of Updated/Modified sections
0	Approved	all

CONTENTS

1.0	OBJECTIVE 目的	2
2.0	LAYOUT OF SITE 作業區域	2
2.1	Coordinates of operation area (WGS84) 作業座標.....	3
3.0	SAILING PLAN 航行計劃	6
3.1	Sailing route of mobilisation 作業現場與動員母港以及補給港的航線規劃.....	6
3.2	Survey sailing route on-site 作業現場航線規劃	7
4.0	OPERATION PERIOD 作業區間	10
5.0	VESSEL INFORMATION 船舶資訊	11
6.0	EMERGENCY CONTACT AND RESPONSIBLE PARTY 緊急聯絡人與專案負責人	13
6.1	Project company 專案公司	13
6.2	Contractor 承包公司.....	13
6.3	Vessel Operator 船舶運營商.....	13

Doc No:	N/A
Page:	3
Rev:	0
Date:	21 November 2024

2.1 Coordinates of operation area (WGS84) 作業座標
Table 1 F2 coordinates of windfarm boundary 海能離岸風力發電廠風場邊界

No	Longitude (E)	Latitude (N)	No	Longitude (E)	Latitude (N)
C1	120°40'57.61"	24°37'41.79"	A23	120°49'09.08"	24°44'35.1"
B2	120°41'29.8"	24°37'24.5"	A26	120°49'49.82"	24°45'20.13"
B1	120°44'01.55"	24°39'15.42"	A27	120°48'47.79"	24°46'06.48"
C2	120°43'39.03"	24°39'41.42"	A28	120°49'19.05"	24°46'44.3"
A13	120°44'32.26"	24°40'19.9"	5-12	120°48'23.99"	24°47'25.44"
A14	120°44'34"	24°40'29.84"	5-11	120°45'32.39"	24°44'28.93"
A15	120°44'40.77"	24°40'39.04"	5-10	120°45'19.66"	24°43'12.97"
A16	120°45'36.99"	24°41'15.48"	5-9	120°44'09.33"	24°42'15.99"
A17	120°46'57.51"	24°42'02.03"	5-8	120°43'48.25"	24°41'25.33"
C3	120°48'44.99"	24°43'29.11"	6-17	120°42'37.23"	24°40'21.86"
C4	120°48'09.43"	24°43'51.9"	6-16	120°41'38.94"	24°39'06.37"
A22	120°48'38.92"	24°44'30.28"	6-15	120°41'24.00"	24°38'22.85"

Doc No:	N/A
Page:	4
Rev:	0
Date:	21 November 2024

Table 2 F2 coordinates of IAC and EC 海能離岸風力發電廠陣列與輸出電纜座標

No	Longitude (E)	Latitude (N)	No	Longitude (E)	Latitude (N)
TJB-A01	120° 49' 54.620"	24° 40' 32.100"	TJB-B01	120° 49' 54.583"	24° 40' 31.979"
	120° 46' 50.601"	24° 42' 15.708"		120° 46' 15.693"	24° 42' 33.851"
A01-A07	120° 46' 49.702"	24° 42' 15.195"	B01-B07	120° 46' 14.758"	24° 42' 33.310"
	120° 46' 21.198"	24° 43' 7.448"		120° 45' 32.659"	24° 43' 38.077"
A07-A08	120° 46' 21.948"	24° 43' 7.581"	B07-B08	120° 45' 32.632"	24° 43' 38.931"
	120° 47' 2.683"	24° 43' 22.971"		120° 45' 37.449"	24° 44' 16.705"
A08-A09	120° 47' 3.501"	24° 43' 23.108"	B08-B09	120° 45' 38.239"	24° 44' 16.865"
	120° 47' 9.689"	24° 44' 14.776"		120° 46' 16.137"	24° 44' 37.346"
A09-A10	120° 47' 9.078"	24° 44' 15.609"	B09-B10	120° 46' 16.162"	24° 44' 38.194"
	120° 47' 41.035"	24° 44' 38.698"		120° 46' 52.440"	24° 45' 45.500"
A10-A11	120° 47' 40.426"	24° 44' 39.541"	B10-B11	120° 46' 51.857"	24° 45' 46.332"
	120° 48' 8.796"	24° 45' 14.332"		120° 47' 32.230"	24° 46' 26.425"
A11-A12	120° 48' 8.978"	24° 45' 15.061"	B11-B12	120° 47' 31.639"	24° 46' 27.257"
	120° 48' 43.295"	24° 45' 19.445"		120° 48' 2.480"	24° 46' 58.371"
A12-A06	120° 48' 44.248"	24° 45' 19.457"	B12-B06	120° 48' 2.654"	24° 46' 59.029"
	120° 49' 39.479"	24° 45' 24.164"		120° 48' 27.698"	24° 46' 39.831"
A06-A05	120° 49' 40.215"	24° 45' 23.470"	B06-B05	120° 48' 28.631"	24° 46' 39.816"
	120° 48' 57.517"	24° 44' 48.602"		120° 48' 52.938"	24° 46' 22.303"
A05-A04	120° 48' 58.064"	24° 44' 47.754"	B05-B04	120° 48' 52.962"	24° 46' 21.480"
	120° 47' 56.409"	24° 44' 2.761"		120° 47' 53.072"	24° 45' 59.616"
A04-A03	120° 47' 56.407"	24° 44' 1.919"	B04-B03	120° 47' 52.138"	24° 45' 59.607"
	120° 48' 21.688"	24° 43' 36.677"		120° 47' 18.504"	24° 45' 11.618"
A03-A02	120° 48' 20.950"	24° 43' 36.525"	B03-B02	120° 47' 19.152"	24° 45' 10.752"
	120° 47' 36.683"	24° 43' 11.814"		120° 46' 27.023"	24° 43' 42.465"
A02-A01	120° 47' 35.909"	24° 43' 11.679"	B02-B01	120° 46' 27.638"	24° 43' 41.604"
	120° 46' 49.869"	24° 42' 15.886"		120° 46' 14.904"	24° 42' 34.012"
TJB-C01	120° 49' 54.537"	24° 40' 31.824"	TJB-D01	120° 49' 54.492"	24° 40' 31.672"
	120° 46' 8.447"	24° 41' 37.951"		120° 43' 0.858"	24° 39' 49.833"
C01-C07	120° 46' 8.304"	24° 41' 37.251"	D01-D02	120° 43' 0.075"	24° 39' 49.676"
	120° 45' 24.601"	24° 41' 10.346"		120° 43' 53.989"	24° 39' 19.413"
C07-C08	120° 45' 23.661"	24° 41' 10.885"	D02-D03	120° 43' 54.735"	24° 39' 18.689"
	120° 44' 32.791"	24° 40' 34.108"		120° 43' 22.631"	24° 38' 50.543"
C08-C09	120° 44' 32.627"	24° 40' 33.422"	D03-D04	120° 43' 21.702"	24° 38' 50.543"
	120° 44' 13.883"	24° 40' 53.762"		120° 42' 19.281"	24° 38' 42.703"
C09-C10	120° 44' 13.923"	24° 40' 54.617"	D04-D05	120° 42' 18.486"	24° 38' 42.566"
	120° 44' 50.447"	24° 41' 29.914"		120° 42' 27.480"	24° 38' 16.162"
C10-C11	120° 44' 49.672"	24° 41' 30.056"	D05-D06	120° 42' 26.670"	24° 38' 16.047"
	120° 44' 21.985"	24° 41' 42.737"		120° 41' 28.055"	24° 37' 31.986"
C11-C06	120° 44' 21.227"	24° 41' 42.913"	D06-D12	120° 41' 27.891"	24° 37' 31.313"
	120° 44' 31.302"	24° 42' 23.592"		120° 41' 8.429"	24° 37' 51.809"

Doc No:	N/A
Page:	5
Rev:	0
Date:	21 November 2024

Vessel specification and project information
 船舶與作業相關資訊

C06-C05	120° 44' 31.478"	24° 42' 24.319"	D12-D11	120° 41' 9.162"	24° 37' 51.958"
	120° 44' 57.117"	24° 42' 14.731"		120° 41' 43.179"	24° 38' 7.181"
C05-C04	120° 44' 57.273"	24° 42' 15.416"	D11-D10	120° 41' 43.962"	24° 38' 7.328"
	120° 45' 4.225"	24° 42' 56.495"		120° 41' 41.108"	24° 38' 37.278"
C04-C03	120° 45' 5.014"	24° 42' 56.656"	D10-D09	120° 41' 41.154"	24° 38' 38.147"
	120° 45' 44.375"	24° 43' 3.794"		120° 41' 50.531"	24° 39' 16.483"
C03-C02	120° 45' 45.147"	24° 43' 3.047"	D09-D08	120° 41' 51.349"	24° 39' 16.621"
	120° 45' 33.792"	24° 42' 2.829"		120° 42' 24.722"	24° 39' 24.117"
C02-C01	120° 45' 33.819"	24° 42' 2.007"	D08-D07	120° 42' 25.531"	24° 39' 24.238"
	120° 46' 7.569"	24° 41' 37.401"		120° 42' 41.372"	24° 40' 17.254"
			D07-D01	120° 42' 41.508"	24° 40' 17.931"
				120° 43' 0.089"	24° 39' 50.534"

Doc No:	N/A
Page:	6
Rev:	0
Date:	21 November 2024

Vessel specification and project information
船舶與作業相關資訊

3.0 SAILING PLAN 航行計劃

3.1 Sailing route of mobilisation 作業現場與動員母港以及補給港的航線規劃

The sailing route of mobilization/base port or logistic port is as below. These are for the information only. The actual route might be changed by captain as the weather and situation dictates.

針對作業現場與動員母港以及補給港的航線規劃如下圖表所示。最終實際航線路徑仍可因現場狀況以及船長經驗而有所變更。


Marine Route 航線路徑	Mobilization/Base Port <> Offshore Site 動員母港(補給港)<>作業現場
世通168號	 <p style="text-align: center;">外埔漁港 Waipu Fishing Port</p>

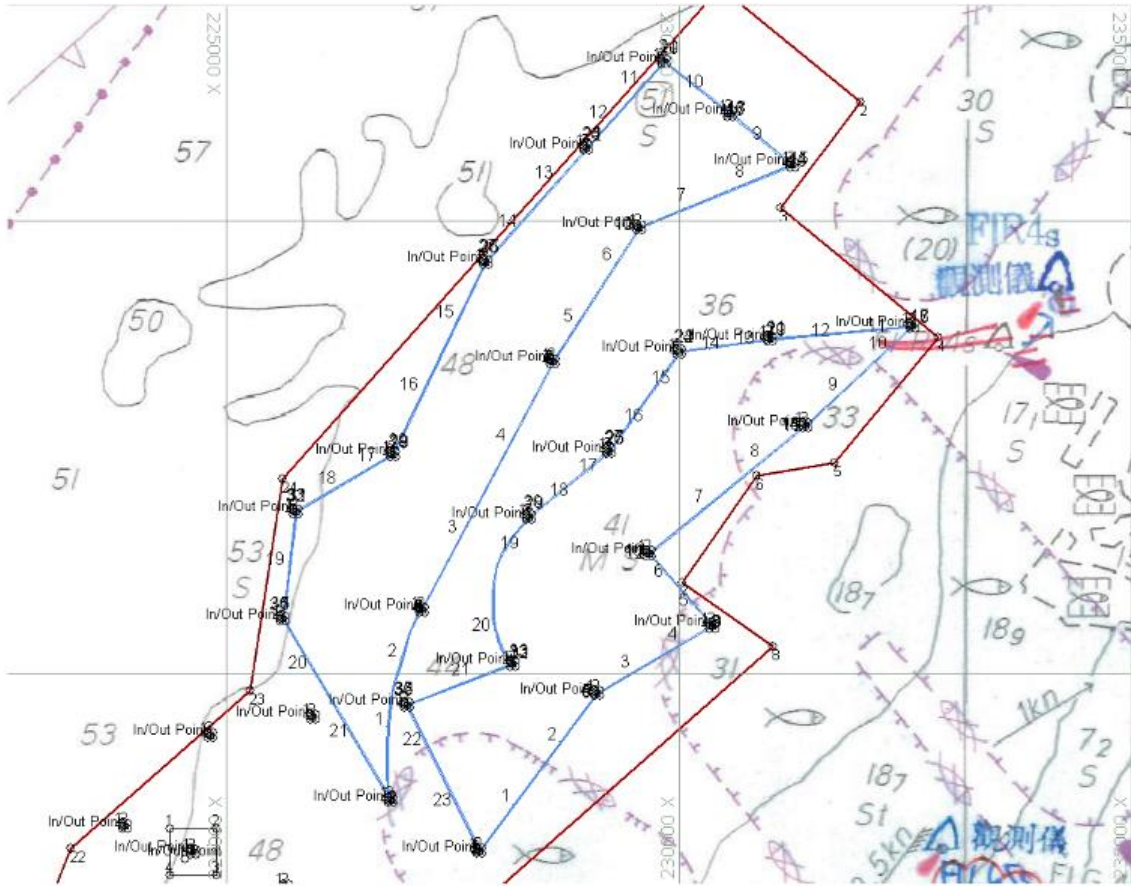
Table 3 Mobilisation route

The bridge will be manned 24hour and they will monitor approaching vessels on AIS and radar.

作業過程中，駕駛台將進行 24 小時輪班，使用 AIS 和雷達上監視與注意接近的船隻。

Doc No:	N/A
Page:	7
Rev:	0
Date:	21 November 2024

3.2 Survey sailing route on-site 作業現場航線規劃



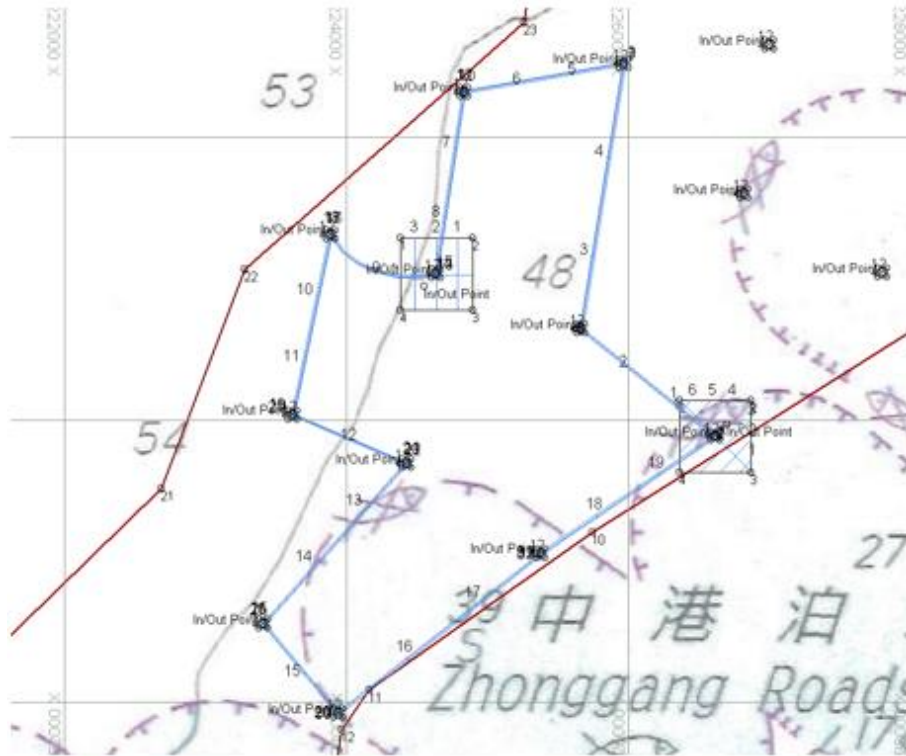
Planned MB Survey Lines in area A & B

計畫多音束聲納側線區域 A 及 B

區域內水深皆>25 公尺。海纜共 24 條，沿海纜路徑往返一次。風機基座共 24 處，繞外圍跑 8 條線，此區扇形測面角度皆為 75 度。

Doc No:	N/A
Page:	8
Rev:	0
Date:	21 November 2024

Vessel specification and project information
船舶與作業相關資訊



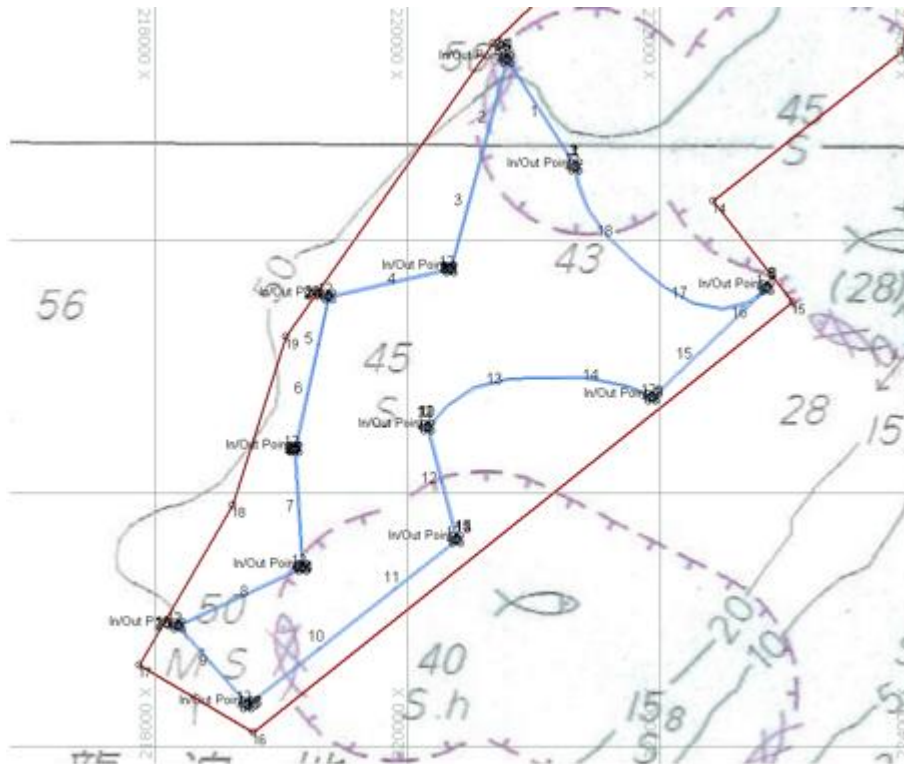
Planned MB Survey Lines in area C

計畫多音束聲納側線區域C

區域內水深皆>25公尺。海纜共11條，沿海纜路徑往返一次。風機基座共11處，其中9處繞外圍跑8條線，此區扇形測面角度皆為75度。

Doc No:	N/A
Page:	9
Rev:	0
Date:	21 November 2024

Vessel specification and project information
船舶與作業相關資訊



Planned MB Survey Lines in area D

計畫多音束聲納側線區域 D

區域內水深皆>25 公尺。海纜共 12 條，沿海纜路徑往返一次。風機基座共 12 處，繞外圍跑 8 條線。此區扇形測面角度皆為 75 度。



Planned MB Survey Lines in Export Cable Route area

計畫多音束聲納掃描輸出海纜區域

水深 5 至 10 公尺測線間距 30 公尺，扇形角度 120 度；水深 10 至 25 公尺測線間距 30 公尺，扇形角度 90 度；水深>25 公尺沿海纜路徑往返一次，扇形角度 75 度

Doc No:	N/A
Page:	10
Rev:	0
Date:	21 November 2024

Vessel specification and project information

船舶與作業相關資訊

4.0 OPERATION PERIOD 作業區間

Expected Operation Period: from 26/08/2024 to 26/12/2024.

預定作業時程：自 26/08/2024 起至 26/12/2024 止。

Note 備註：

The above is for information only. The actual schedule will be changed as the weather and situation dictates.

上列作業時間及作業內容供參考(實際作業期間將隨作業進度及海象而調整)

Doc No:	N/A
Page:	11
Rev:	0
Date:	21 November 2024

Vessel specification and project information
船舶與作業相關資訊

5.0 VESSEL INFORMATION 船舶資訊

船名 Vessel Name	世通 168 號 Shyh Tong No.168
船籍港 Home Port	苗栗外埔港
總噸數 Gross Tonnage	18.35
船長 LOA	14.77m
船寬 Width	3.70m
IMO	N/A
MMSI	416004486



Doc No:	N/A
Page:	12
Rev:	0
Date:	21 November 2024

Vessel specification and project information
船舶與作業相關資訊



Table 4 世通 168 號 Shyh Tong No.168

Doc No:	N/A
Page:	13
Rev:	0
Date:	21 November 2024

6.0 emergency contact and responsible party 緊急聯絡人與專案負責人

6.1 Project company 專案公司

專案公司 Project company	FORMOSA 2 WIND POWER CO., LTD.		
職位 Position	公司 Company	姓名 Name	電話 Mobile Phone
控制中心	海能風力發電股份有限公司	F2 OCC	+886 966138536 04 23889003 ext. 1
運營工程師	海能風力發電股份有限公司	顏鈺承(Jensen)	+886 909365833
運營經理	海能風力發電股份有限公司	柯利鴻 LiHung Ko	+886 909303825

6.2 Contractor 承包公司

承包公司 Contractor	Taiwan Offshore Wind Farm Services Corporation 台灣離岸風場服務股份有限公司		
職位 Position	公司 Company	姓名 Name	電話 Mobile Phone
執行長特別助理	台灣離岸風場服務股份有限公司	杜宇軒	+886 931 255 139
專案經理	台灣離岸風場服務股份有限公司	曾立婷	+886 912 079 651
專案經理	台灣離岸風場服務股份有限公司	林季容	+886 958 306 371
環安衛暨許可經理	台灣離岸風場服務股份有限公司	孫浩鈞	+886 918 711 085

6.3 Vessel Operator 船舶運營商

船舶供應商 Contractor	王世通 Shyh Tong Wang			
船名 Vessel	職位 Position	公司 Company	姓名 Name	電話 Mobile Phone
世通 168 號 Shyh Tong No.168	船長	-	王世通	+886 910 721 428