

# Port state control 2019 annual Report

Taiwan, Republic of China



交通部航港局  
Maritime and Port Bureau, MOTC

Published on May 2020

## Contents

PSC inspect record during 2003-2019 .....	10
Inspect highlight in 2019.....	13
2019 PSC Performance .....	15
Inspection highlight in 2020 .....	23
Target of inspection distribute to maritime affairs centers as quarters of year.....	25
PSCO training and recruit project in 2020 .....	29
Conclusion.....	35
Appendix 1-Flow chart of PSC operation .....	38
Appendix 2-Form-A1 .....	40
Appendix 3-Form-B1 .....	41
Appendix 4- (Notificatio of release of ship).....	42
Appendix 5- (Notification of detention of ship).....	43
Appendix 6-Report of deficiency.....	44
Appendix 7(Report of action taken to the notifying authority) ..	45
Appendix 8-e-mail and address information for Flag states of ship .....	46
Appendix 9-Representative office in Taiwan .....	48

## Figure list

Fig 1: Organization Chart of PSC .....	8
Fig 2 Inspection, deficiency and detention amount by ship age. 11	
Fig 3 Inspection, deficiency and detention rate by ship age.....	11
Fig 4 PSC inspection amount and rate.....	12
Fig 5 PSC inspection deficiency amount and rate .....	12
Fig 6 PSC inspection detention amount and rate.....	13
Fig.7 statistics data by season .....	16
Fig.8:PSC inspection amount by ship type .....	18
Fig.9:PSC inspection amount by flag state .....	19
Fig.10:PSC inspection, deficiency and detention amount.....	21
Fig.11:PSC inspection, deficiency and detention rate .....	21
Fig.12: deficiency and detention statistics on Maritime affairs centers.....	22
Fig.13: deficiency and detention rate on Maritime affairs centers .....	23
Fig 14: Number of target & Inspected by Season during 2019- 2020 .....	27
Fig 15: Number of target & Inspected during by Maritime affairs centers 2019-2020 .....	27

## Table list

Table 1:PSC activities and performance.....	10
Table 2: Statistics data by season.....	16
Table.3 Major categories of deficiencies 2019 .....	17
Table 4:PSC inspection amount by ship type .....	18
Table 5:PSC inspection amount by flag state .....	19
Table 6:General categories on port state control inspection by age of vessel .....	20
Table 7:Sum of inspection on Maritime affairs centers .....	22
Table 8:PSC inspection amount in 2019 and 2020.....	26
Table 9:PSC inspection amount between 2019 and 2020 by maritime affairs center .....	26
Table 10: Time window of PSC inspection. ....	33

Preamble:

1. According to the order by President of the Republic of China (90) (華總一義字)hua tzung yi yi tz No.9000224660 Amendment to Article50 November 21, 2001 that “The matters not covered by this Law relate to international affairs, MOTC may reference to international conventions or agreements and attachment of rules, methods, standards, recommendations or procedures for implement” ,Port Authority (Harbor Bureau) announced that commercial port safety and management items involve international affairs, competent authorities shall refer to Procedure for international conventions, agreements, rules, Port State Control and TOKTO MOU implement examination towards the entrance and departure of foreign merchant ships since 1st January 2003.
2. PSCO perform basis on the Law of domestic:
  - (1). The Commercial Port Law: Amendment to whole articles promulgated on December 28, 2011-Relevant Articles as follow:
    - i. Article 58 “The Procedures for Port State Control and its regulations announced by the commercial port authority according to the International Maritime Organization or other relevant authorities, should implement examination of ship certificate, security , equipment , crew quotas and other matters towards the entrance and departure of foreign merchant ships.”
    - ii. Article 59 “When the commercial port authority executes foreign merchant ship control examination, they should hand it to the master to sign after information have been recorded in the inspection record. If there are any violations, the commercial port authority has to be improved in a limited time.

After foreign merchant ships have made improvements according to the preceding paragraph, they should request the commercial port authority for reexamination, and pay for the reexamination fees as well. The amounts should be stipulated by the commercial port authority, and check and ratified by competent authority.” .

- iii. Article 60 “When foreign merchant ships seriously violate control examination regulations, influence ship navigation safety of ship personnel, and can seriously threaten marine environment, the commercial port authority have to retain ships till improvements are completed, in order for them to be approved to navigate.

Where foreign merchant ships violate control examination regulation, our country has no repairing equipment technology, and no accessory material to provide to change or retain illegal ships. Those that will influence port safety or public interests, have to produce entry level verification proof, and receive approval from commercial port authority to be able to navigate.”

- iv. Article 75 “When commercial port safety and management items involve international affairs, competent authorities shall refer to international conventions, agreements, and rules, methods, standards, suggestions of its supplementary rules.” .

(2). The Law of Ships:.

Article 101 “For other rules and regulations on ship technology and management, the competent authority may refer to the standards, recommendations, measures or procedures set down in the relevant international conventions or agreements and their

annexes, and adopt them for promulgation and enforcement.”

3. In accordance with the provisions of the applicable Article 58 、 59 、 60 of The Commercial Port Law , Maritime and Port Bureau(MPB) may conduct inspections by PSCOs of foreign ships in commercial ports to verify that the condition of the ship and its equipment comply with the international regulations and that the ship is manned and operated in compliance with these rules. If there are any violations, the Maritime and Port Bureau may ask master of ship improved in a limited time. After rectified the deficiencies, Master of ship should request the Maritime and Port Bureau for re-examination, and pay for the re-examination fees as well. When foreign merchant ships seriously violate control examination regulations, influence ship navigation safety of ship personnel, and can seriously threaten marine environment, The Maritime and Port Bureau have to detain ships till improvements are completed in order for them to be approved to navigate.  
The purpose of control is in order to focus on substandard ships for maintain marine environment and safety of life.
4. The Maritime and Port Bureau was established for instead organization of Harbor Bureau spread whole country at March 2012. Integrate the resources of PSC recommenced and improved the quality and quantity of port state control inspection for curb substandard ships.  
At the January 2014, The Maritime and Port Bureau start to construct a New Inspection Regime (NIR) on MTNet for selection of risky ships in line with Tokyo MOU. This regime conducted in 2017, As well connect with PortNet that in charge of Ship entry and exit.

# Organization Chart of PSC

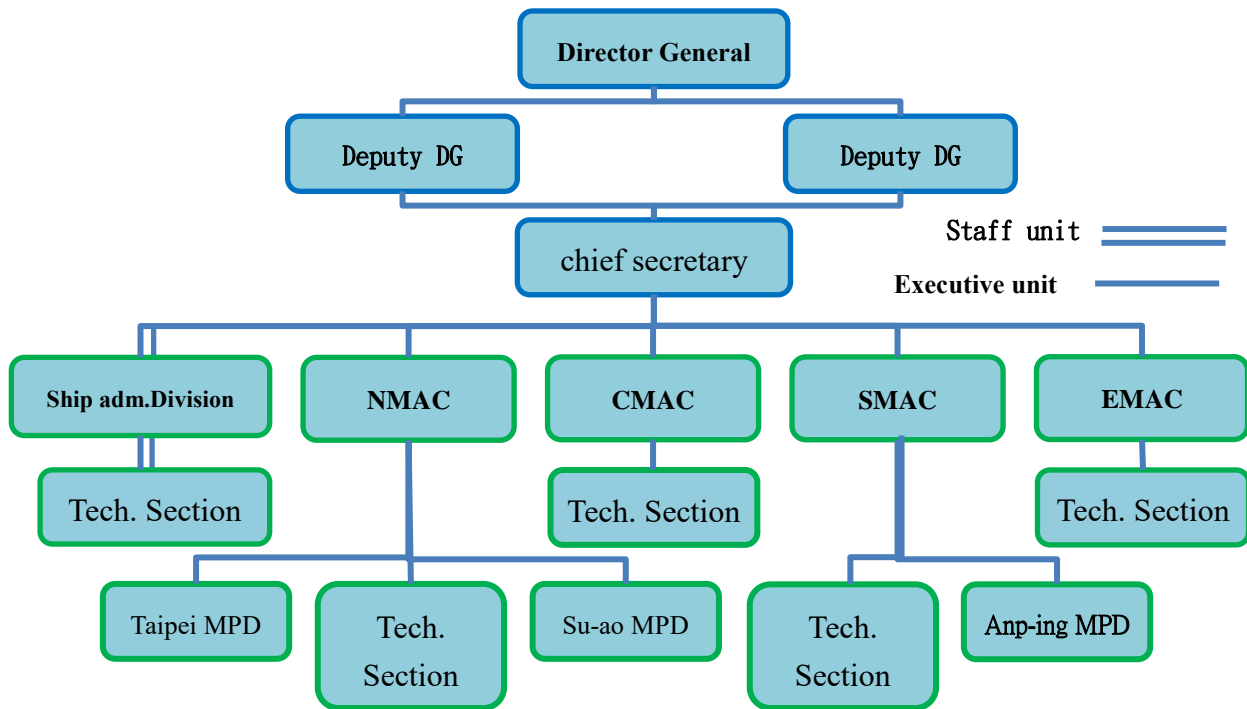


Fig 1: Organization Chart of PSC

## PSC Liaison office:

MPB PSC: Deputy Director: Wang Dah-Ming

Ship administration division/PSCO administrator

Address: No.1, Ln. 1, Sec. 3, Heping E. Rd., Da'an Dist., Taipei City  
10669, Taiwan (R.O.C.)

Tel : +886-2-8978-2637

Fax: +886-2-27017073

E-mail :tmwang@motcmpb.gov.tw



North Taiwan Maritime  
Affairs Center :

Chief: rong-kun,Chao

Address:4F., No.6,Gangxi  
Street, Keelung City,  
Taiwan(R.O.C.)

Tel:886-2-89783515

Fax:886-2-24284319

E-

mail :jkchao@motcmpb.gov.t

w

Central Taiwan Maritime  
Affairs Center ,

Chief: his-wen,Kuo

Address:No.83-3,Linhai  
Road, Taichung City,  
Taiwan(R.O.C.)

Tel:886-4-

23690677,Fax:886-4-

26571375

E-

mail :hwkuo@motcmpb.gov.t

w

South Taiwan Maritime  
Affairs Center

Chief: chin-fa,Lu

Address:No.4,penglai road,  
Kaohsiung City,  
Taiwan(R.O.C.)

Tel:886-7-2620585Fax:886-

7-5215805

E-

mail :cflu@motcmpb.gov.tw

East Taiwan Maritime Affairs  
Center, Chief: han-yuag,Tsai

Address: No.15,Gangkou  
Road, Hualien Country,  
Taiwan(R.O.C.)

Tel:886-3-8509291 Fax:886-  
3-8225981

E-

mail :hytsai@motcmpb.gov.t

w

## PSC inspect record during 2003-2019

### 1. PSC activities and performance

Ship's age more than 21 years be focused on the port state control inspect since 2003 to 2019 as Table 1 .

**Table 1: 1.PSC activities and performance**

2003-2019	Age	inspection(B)	deficiency (C)	detention (D)	Rate of inspection (B/A)	Rate of deficiency (C/B)	Rate of detention (D/B)	Individual Ship (A)
MPB	<10y	3061	1910	253	19.38%	62.40%	8.27%	15791
	11y~15y	1458	988	120	21.49%	67.76%	8.23%	6785
	16y~20y	1366	1041	240	32.26%	76.21%	17.57%	4235
	>21y	2973	2657	1178	67.91%	89.37%	39.62%	4378
	Total	8858	6596	1791	28.40%	74.46%	20.22%	31189

### 2. Inspection, deficiency and detention amount by ship age

A lot of deficiency and detention concentrate in the category of ship age more than 21 years since 2003 to 2019 as Fig 1.

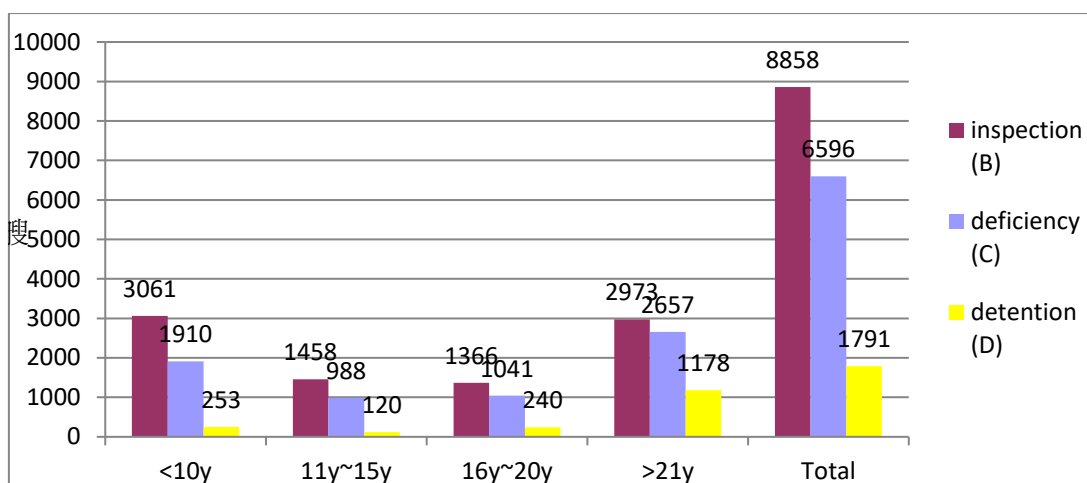


Fig 2 Inspection, deficiency and detention amount by ship age.

3. Inspection, deficiency and detention rate by ship age  
 The rate of deficiency and detention concentrate in the category of ship age more than 21 years since 2003 to 2019 as Fig 3.

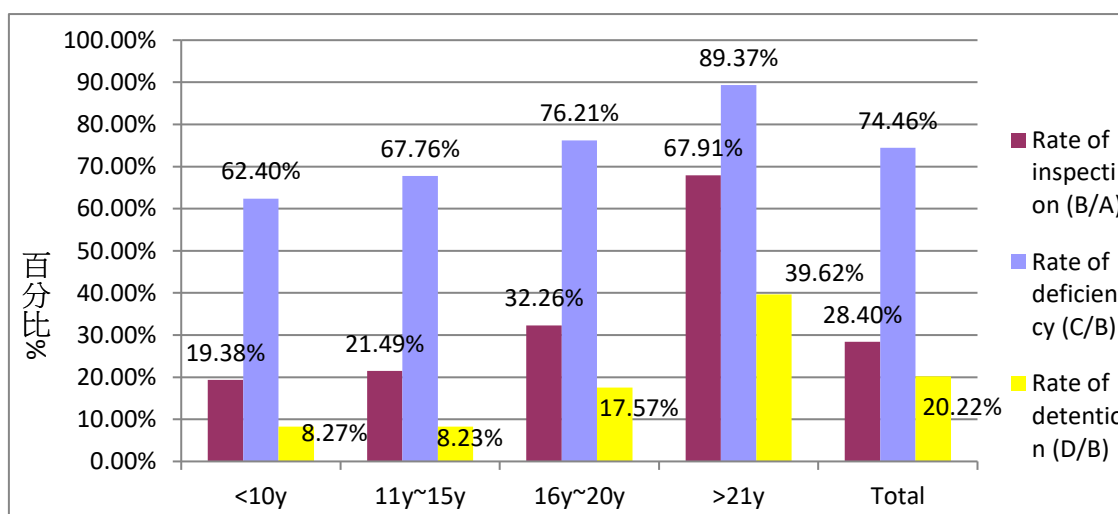


Fig 3 Inspection, deficiency and detention rate by ship age

4. PSC performance:  
 (1). PSC inspection amount and rate

The numbers of inspection from 140 ships to 827ships as well as the rate of inspection from 4.65% raise to 16.0% since 2003 to 2019 as Fig 4.

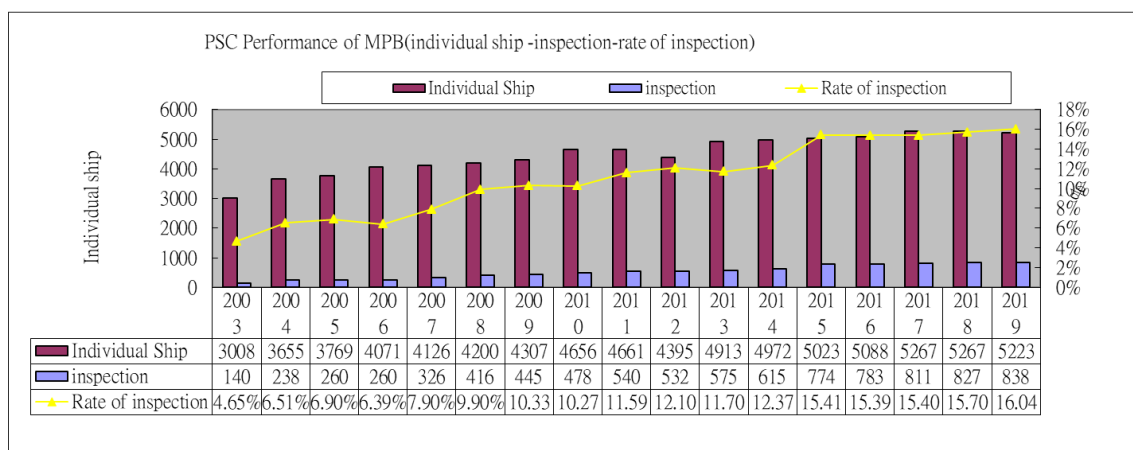


Fig 4 PSC inspection amount and rate

(2). PSC inspection deficiency amount and rate

The numbers of deficiency ship suffered from 104 ships in 2003 increase to 635 ships on the peak in 2015, after this, the numbers of deficiency ship suffered decreasing to 472 ships owing to efficiency by inspect of PSC, as well as the rate of deficiency ship suffered from 82.04% decrease to 56.32% since 2003 to 2019 as Fig 5.

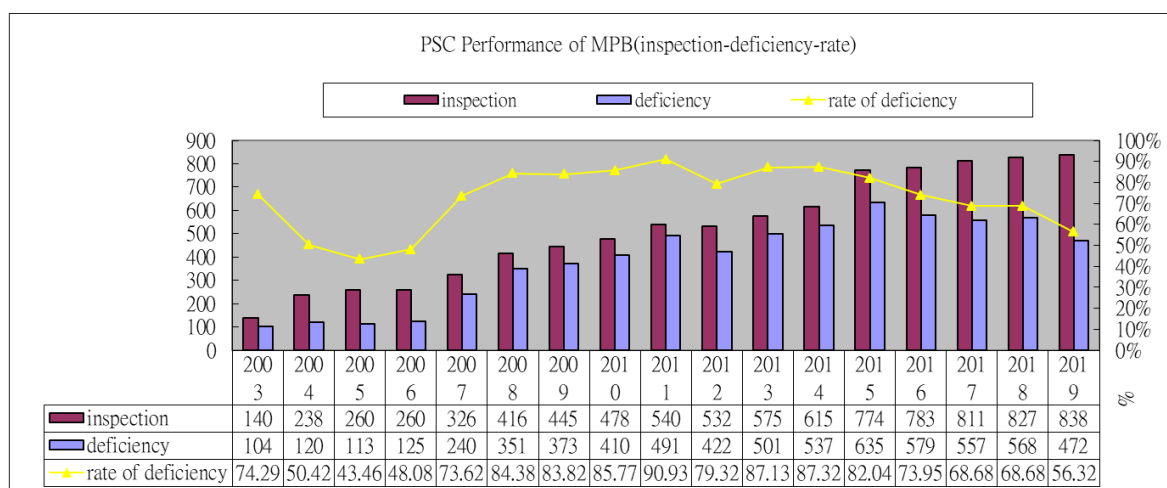


Fig 5 PSC inspection deficiency amount and rate

(3). PSC inspection detention amount and rate

The numbers of detention ship suffered from 9 ships in 2003 increase to 191 ships in 2013 on the peak. After this, the numbers of detention ship suffered decreasing to 64 ships in 2019 due to efficiency by PSCO inspect causing phase out of sub-standard ship. as Fig 6

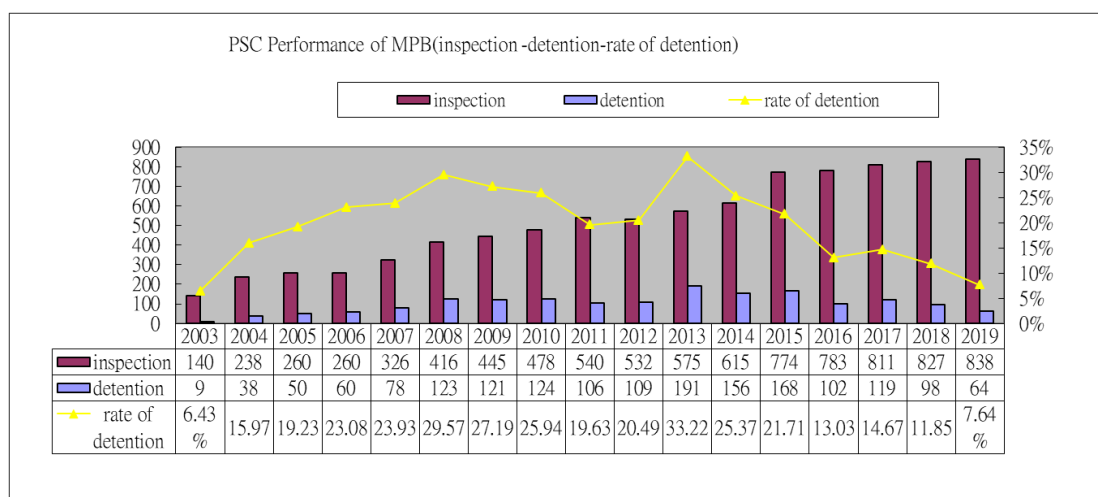


Fig 6 PSC inspection detention amount and rate.

## Inspect highlight in 2019

1. Cooperation with Tokyo Mou & Paris Mou implement PSC concentrated inspection campaign(CIC) that item of Emergency systems and proceduress.
2. Enhanced inspection frequency of foreign oil tanker:  
According to the announcement of Ministry of Transportation and Communications (MOTC) on 19<sup>th</sup> September 2012 that 【Adopt regulation 20(5) and 20(7), and regulation 21(5) and 21(6) of MARPOL 73/78 Annex I ”Regulations for the Prevention of Pollution by oil”. ”Foreign single hall oil tankers of 5,000 tons deadweight and above” and“Foreign single hall oil tankers carrying heavy grade oil as cargo of 600 tons deadweight and above ” are denied entry into the ports and offshore terminals under the jurisdiction of Republic of China from 1

January 2013】

3. Strengthen the inspection of general cargo ships and bulk carriers, especially the inspection of foreign vessels in which carried gravel in general cargo ships.
4. After discuss with delegates of MAC make a target of inspection amount of 805 ship as rate of 15 percentage base on individual entry ship number in 2018.As well as after numerous scrolling reviews during September to the end of Year for revise the inspection goal of rate of 15% base on 2019 amount of individual ships .

The statistics provide from MTNet. There are finally 838 ships were inspected as ratio of 104.1% base on 805 ship(target of inspect amount), and 16.04% base on individual entry ship number in 2019.

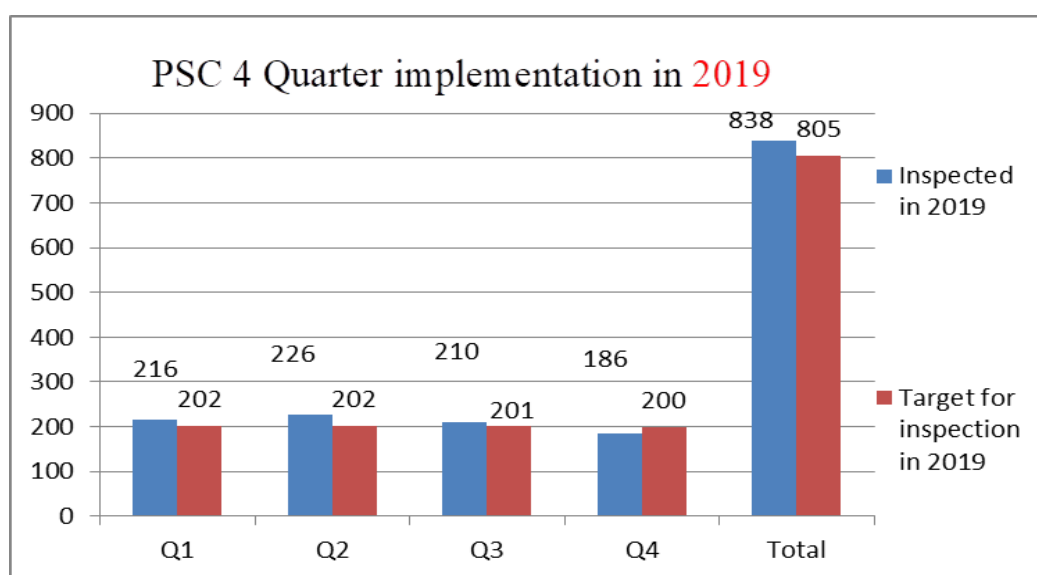
## 2019 PSC Performance

1. Foreign ship ( Individual Ship ) access to the port of Taiwan ROC were amount of 5,223 ships base on the 2019 statistics of MTNet, There are 838 ships were inspected which rate of inspect 16.04%.
2. According inspect vessel type analysis that bulk carrier and general cargo ship were most frequency inspected then Tanker and full container ship . Major categories of deficiencies were Safety of Navigation 、 Working and Living Conditions 、 Certificate & Documentation verify 、 Fire safety 、 Lifesaving appliances 、 Watertight 、 Weather tight conditions and Pollution prevention etc...
3. The mainland China vessels were inspected that sailing on both sides of the Straits are as follows : Access enter the port of Taiwan in 2019 were total amount 341 ships ,were inspected 131 ships which rate of inspection 38.42%.
4. Additional inspection the item of Emergency systems and procedures during September to November for consistence with Concentrated Inspection Campaign (CIC) of Tokyo Mou.
5. Inspection performance in 2019: Under the purpose of rate of inspection 15 % which ship enter to the port of Taiwan R.O.C. The target of ship inspection were 805 ships, There are 838 ships were inspected which rate of inspection 104.1%;Total amount of individual ship enter to port of Taiwan were 5,223 in 2019 which rate of inspection 16.04%.

PSC 4 Quarter implementation in 2019

	Q1	Q2	Q3	Q4	Total
Inspected in 2019	216	226	210	186	838
Target for inspection in 2019	202	202	201	200	805
Rate of inspection	106.9%	111.9%	104.5%	93.0%	104.1%

**Table 2: Statistics data by season**



**Fig. 7 statistics data by season**

6. Deficiencies types for Port State Control inspection in 2019:

Analysis Major categories of deficiencies were Safety of Navigation 、 Working and Living Conditions 、 Certificate & Documentation verify 、 Fire safety 、 Lifesaving appliances 、 Watertight 、 Weather tight conditions ... etc.



缺失章節Code of Deficiency	缺失數(Number of deficiencies)	百分比 (percentage)
Safety of Navigation航行安全	523	22.6%
Working and Living Conditions工作環境及生活條件	305	13.2%
Certificate & Documentation證書	284	12.3%
Fire safety防火安全	203	8.8%
Life saving appliances救生裝備	175	7.6%
Other其他	126	5.4%
Water/Weathertight conditions水、風雨密	125	5.4%
Pollution prevention污染防護	124	5.4%
Emergency Systems緊急應變系統	92	4.0%
Radio Communications無線電通訊	81	3.5%
Structural Conditions結構	71	3.1%
Propulsion and auxiliary machinery推進主機與輔機	47	2.0%
ISM國際船舶安全管理	42	1.8%
Alarms警報系統	40	1.7%
ISPS	32	1.4%
Labour Conditions勞動條件	29	1.3%
Cargo operations including equipment貨物操作及裝備	17	0.7%
	2316	100.0%

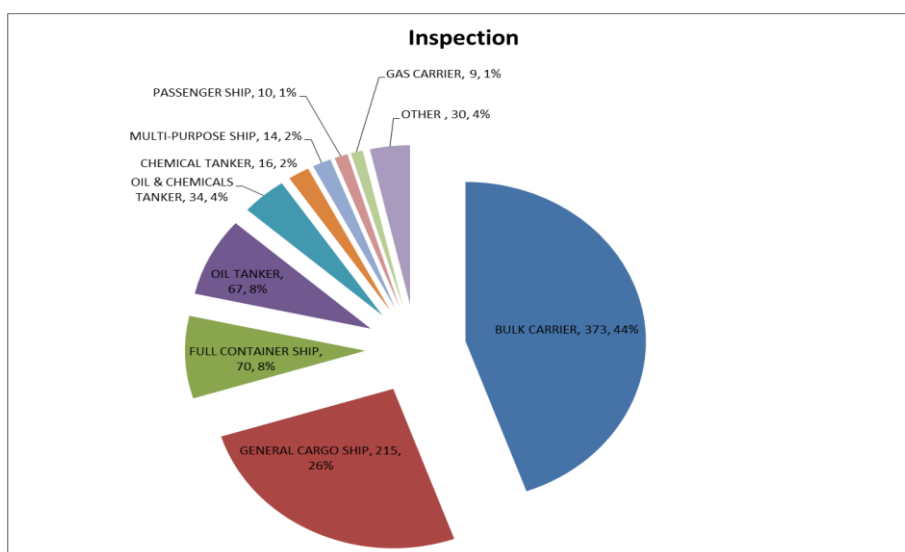
**Table.3 Major categories of deficiencies 2019**

#### 6. Statistic List of ship types for Port State Control inspection in 2019

A total of 838 ship types were inspected by port state control in 2019. There were 373 ships of bulk carrier, 215 ships of general cargo, 70 ships of Full container, 67 ships of oil tanker. PSCO inspection focus on the high risk ship of bulk carrier、general cargo and oil tanker as Table 4

TYPE	Inspection
BULK CARRIER	373
GENERAL CARGO SHIP	215
FULL CONTAINER SHIP	70
OIL TANKER	67
OIL & CHEMICALS TANKER	34
CHEMICAL TANKER	16
MULTI-PURPOSE SHIP	14
PASSENGER SHIP	10
GAS CARRIER	9
OTHER	30
合計	838

**Table 4:PSC inspection amount by ship type**



**Fig.8:PSC inspection amount by ship type**

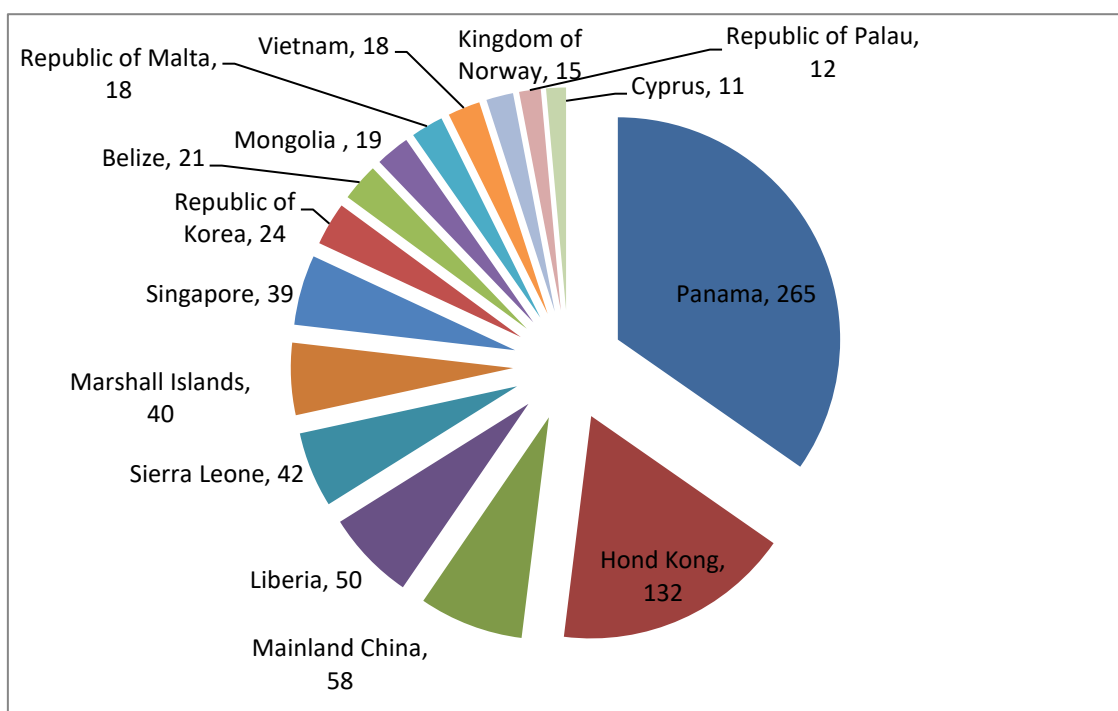
## 7. Inspection efforts of Flag state ship in 2019

Under statistical analysis Port State control inspection focus on the Flag of Convenience ship. To sequence in order ,were Panama 265, Hong Kong 132, mainland China 58, Liberia 50, Sierra Leone 42, Marshall Islands 40, Singapore 39, Republic of Korea 24,Belize 21, Mongolia 19, Republic of Malta 18, Vietnam 18, Kingdom of Norway 15,Republic of Palau 12.... etc.

Flag	Inspection
Panama	265
Hond Kong	132
Mainland China	58
Liberia	50

Sierra Leone	42
Marshall Islands	40
Singapore	39
Korea, Republic of	24
Belize	21
Mongolia	19
Republic of Malta	18
Vietnam	18
Kingdom of Norway	15
Republic of Palau	12
Cyprus	11
OTHER	74
Total:	838

**Table 5:PSC inspection amount by flag state.**



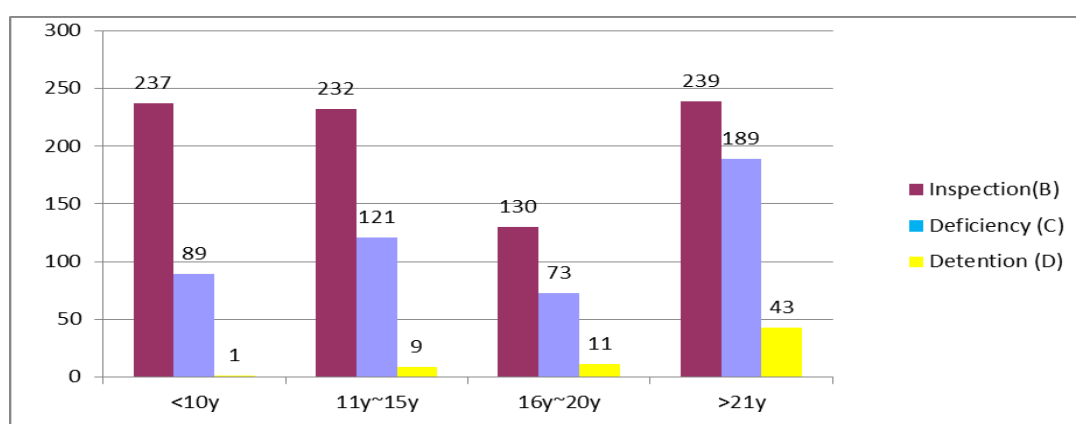
**Fig.9:PSC inspection amount by flag state**

## 8. Implementation of Port State Control in 2019

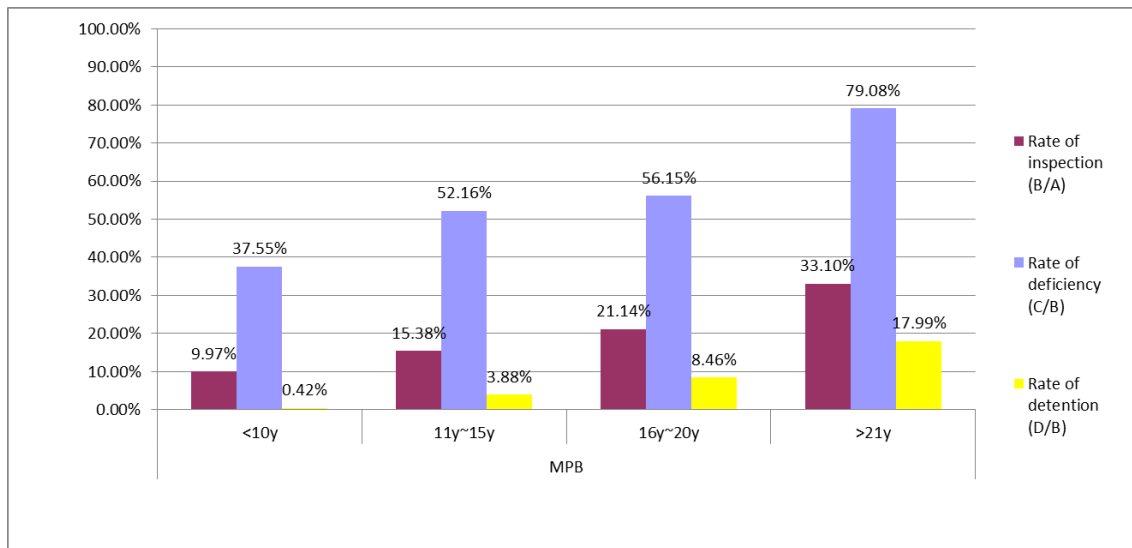
General categories on port state control inspection by age of vessel as Table 6

2019	Age	Rate of inspection (B/A)	Rate of deficiency (C/B)	Rate of detention (D/B)	Inspection(B)	Deficiency (C)	Detention (D)
MPB	<10y	9.97%	37.55%	0.42%	237	89	1
	11y~15y	15.38%	52.16%	3.88%	232	121	9
	16y~20y	21.14%	56.15%	8.46%	130	73	11
	>21y	33.10%	79.08%	17.99%	239	189	43
	Total	16.04%	56.32%	7.64%	838	472	64

**Table 6:General categories on port state control inspection by age of vessel**



**Fig.10:PSC inspection, deficiency and detention amount**



**Fig.11:PSC inspection, deficiency and detention rate**

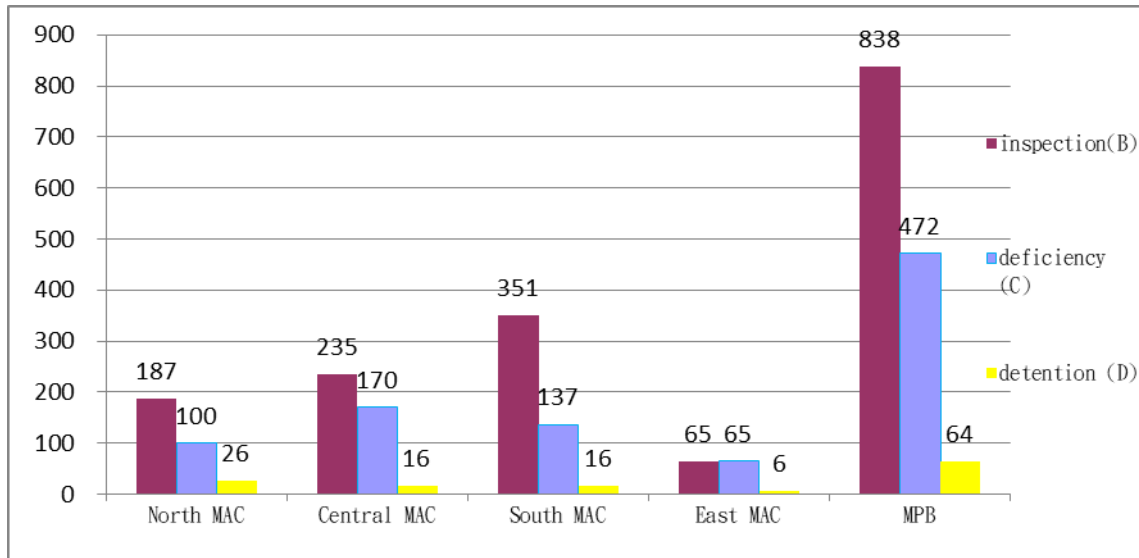
## 9. Implementation of Port State Control on Maritime affairs centers in 2019

### (1). Sum of inspection on Maritime affairs centers

2019		Individual Ship (A)	inspection (B)	deficiency (C)	detention (D)	Rate of inspection (B/A)	Rate of deficiency (C/B)	Rate of detention (D/B)
MPB	North MAC	1339	187	100	26	13.97%	53.48%	13.90%
	Central MAC	2456	235	170	16	9.57%	72.34%	6.81%
	South MAC	3507	351	137	16	10.01%	39.03%	4.56%
	East MAC	201	65	65	6	32.34%	100.00%	9.23%
	MPB	5223	838	472	64	16.04%	56.32%	7.64%

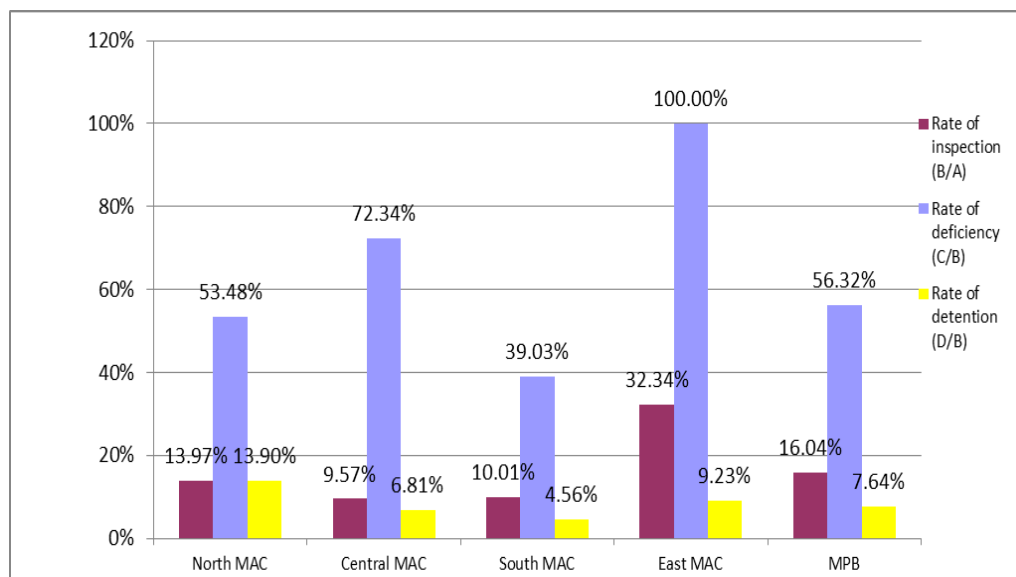
**Table 7:Sum of inspection on Maritime affairs centers**

(2). PSC inspection, deficiency and detention statistics on Maritime affairs centers



**Fig.12: deficiency and detention statistics on Maritime affairs centers**

(3). PSC inspection, deficiency and detention rate on Maritime affairs centers



**Fig.13: deficiency and detention rate on Maritime affairs centers**

## **Inspection highlight in 2020**

- (1). In order to update the PSCO inspection knowledge and skill to the same level as that of the major Port State Control MOUs. Propose a training plan of Regulations for the Stability in general cooperation with Taiwan-Canada Maritime Systems Technology Program by COMART International Corp for Tokyo MOU CIC 2020.
- (2). Port State Control Inspection the so-called high-risk ship was definition by MOTC in 2010 as follow:
  - i. Age of the ship more than 15 years as well as more than 3,000 gross tonnage of oil tankers
  - ii. Age of the ship for more than 10 years of chemical tankers and liquefied gas tankers.
  - iii. Bulk carriers of more than 12 years of age.
  - iv. Passenger ships of more than 15 years of age.
- (3). Port State Control Officers should be inspected all ships owing to MEPC 70 decide to "1 January 2020" as the effective date of implementation for ships to comply with global 0.50% m/m sulphur content of fuel oil requirement and adopted resolution MEPC.280(70) on the Effective date of implementation of the fuel oil standard in regulation 14.1.3 of MARPOL Annex VI. Foreign vessels and flag ships that sailing in international routes entering into international commercial port area under the jurisdiction of the Republic of China shall utilize low sulfur fuel oil (sulfur- bearing not more than 0.5% by weight), or equipment or alternative fuels that achieve the equivalent effect of emission reduction.

(4). Inspection focus on Single hull oil tankers and chemical tankers :

- i. Enhanced inspection frequency of foreign oil tanker: According to the announcement of Ministry of Transportation and Communications (MOTC) on 19th September 2012 that 【Adopt regulation 20(5) and 20(7), and regulation 21(5) and 21(6) of MARPOL 73/78 Annex I “Regulations for the Prevention of Pollution by oil”. “Foreign single hull oil tankers of 5,000 tons deadweight and above” and “Foreign single hull oil tankers carrying heavy grade oil as cargo of 600 tons deadweight and above ” are denied entry into the ports and offshore terminals under the jurisdiction of Republic of China from 1 January 2013】 .
- ii. Inspection some Tankers and chemical vessels according with Annex II of MARPOL and International Code for the Construction and Equipment of Ships Carrying Dangerous Chemicals in Bulk(IBC Code).
- iii. Port state control officers come on board inspection according with international convention of BUNKERS and CLC focus on the Insurance certificate that assure by the ship’s owner.

(5). The International Convention for the Control and Management of Ships' Ballast Water and Sediments (BWM Convention) was enter into force on 8 September 2017 owing to the convention stipulates that it will enter into force 12 months after ratified by a minimum of 30 States, representing 35% of world merchant shipping tonnage. The accession brings the combined tonnage of contracting States in the end of 2019 to the treaty be 80.76%, with 81 contracting Parties.

The Ballast Water Management Convention will require all ships under international trade to manage their ballast water and sediments to certain standards, according to a



ship-specific ballast water management plan. Port State Control Officers should be inspected all ships with a ballast water record book and an International Ballast Water Management Certificate.

- (6). Because of foreign sub-standard ships which oil tanker and bulk carrier access enter the port of Taiwan R.O.C as well as sail surrounding waters make a lot of issue of concern which marine ecological environment and safety navigation. MPB conduct a new Project to inspect by PSCO focus on a list of 130 ships that be suspected sub-standard ship.
- (7). Enhanced inspection of ship type of bulk carrier and general cargo ship which age more than 16 years old, and which the purpose of Gravel loading.

### **Target of inspection distribute to maritime affairs centers as quarters of year.**

The MPB was founded on March 1, 2012, Port state control sustain inspection of foreign vessels in national ports to verify that the condition of ships and equipment comply with the requirements of international conventions and that ships are manned and operated in compliance with applicable international laws.

For the purpose describe above, Target of inspection in 2020 were 816 ships, Distribution as follow:

1. North Maritime affairs center 184 ships
2. Central Maritime affairs center 218 ships
3. South Maritime affairs center 349 ships
4. East Maritime affairs center 65 ships.

In order to reaching the goal of rate of 15% inspection, PSCO will recheck frequently for update performance.

	Q1	Q2	Q3	Q4	Total	Rate of inspection
Inspected in 2019	216	226	210	186	838	16.04%
Target for inspection in 2019	202	202	201	200	805	15.00%
Target for inspection in 2020	204	206	204	202	816	15.00%

Table 8:PSC inspection amount in 2019 and 2020

	NAC	CAC	SAC	EAC	Total
Inspected in 2019	187	235	351	65	838
Target for inspection in 2019	182	215	344	64	805
Target for inspection in 2020	184	218	349	65	816

Table 9:PSC inspection amount between 2019 and 2020 by maritime affairs center

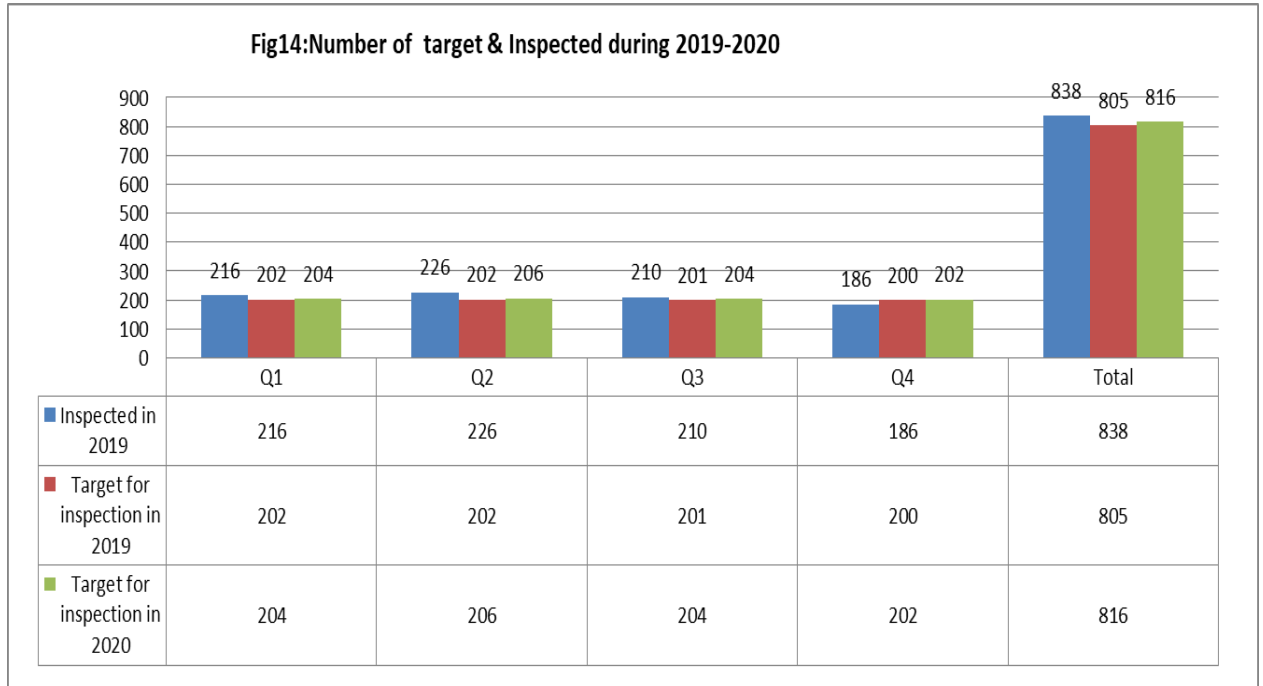


Fig 14: Number of target & Inspected by Season during 2019-2020

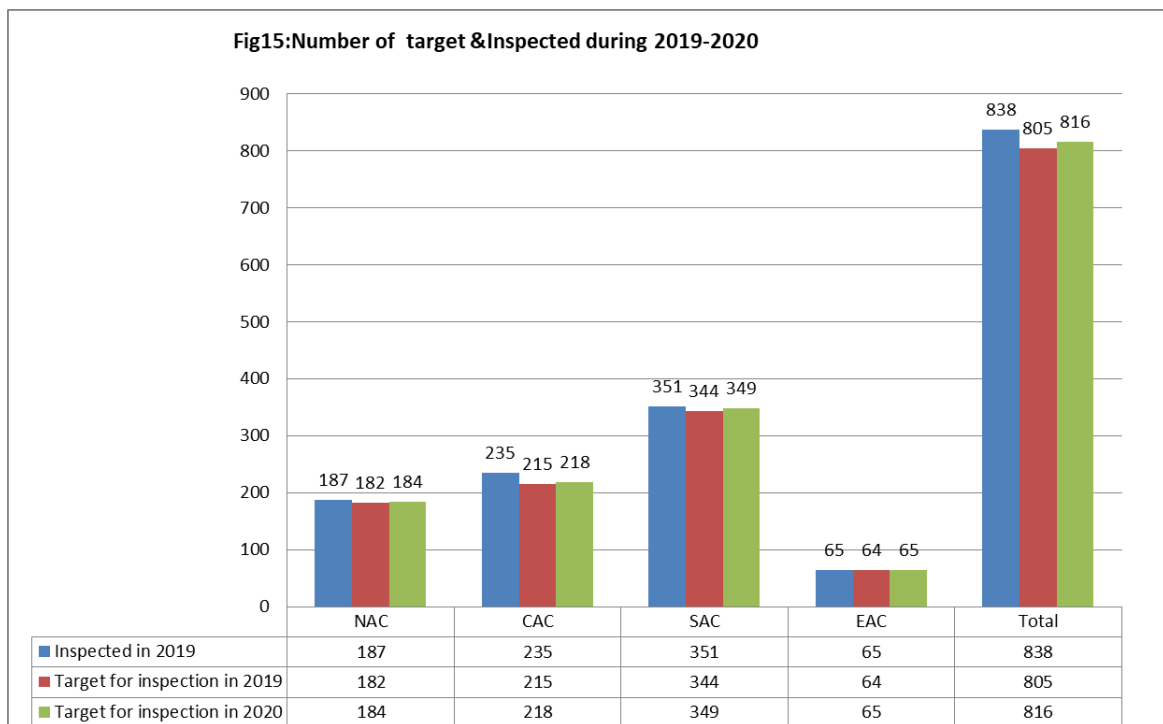


Fig 15: Number of target & Inspected during by Maritime affairs centers 2019-2020



## **PSCO training and recruit project in 2020**

PSCO could not be dedicated to the job of PSC inspection due to personal promotion or retirement .MPB had been Conducted the basic training of Port State Control Inspector for new recruiter according to the IMO Model Course3.09 during 30th May to 17th June 2016.

### **1. The issues for PSCO professional training**

For the purpose of enhance ability and quality of PSCO, There are two project be conducted which Professional training for Senior and junior.

(1). Specifically training : Training for senior port state control officers through the " Taiwan-Canada MOU on Maritime systems technology program " as well as integrated into inspect trends with current Paris MOU and Tokyo MOU, Make a communication connect and synchronous operation with international port State inspection

i. For the issue of Stability in general in Tokyo MOU CIC will be held during September to November 2020, Conducting the Professional courses by Taiwan-Canada Maritime System Technical Cooperation Program.

ii. Training for High risk ships of Oil tankers and Chemical ship:

Conduct the Professional courses of Annex I 、 II of MARPOL 73/78 and International code for the construction and equipment of ships carrying dangerous chemicals in bulk,( IBC code) in comply with the announcement of Ministry of Transportation and Communications (MOTC) on 19th September 2012 that  
【 Adopt regulation 20(5) and 20(7), and regulation 21(5) and 21(6) of MARPOL 73/78 Annex I ”

Regulations for the Prevention of Pollution by oil” . ”  
Foreign single hull oil tankers of 5,000 tons deadweight  
and above” and “Foreign single hull oil tankers  
carrying heavy grade oil as cargo of 600 tons  
deadweight and above ” are denied entry into the  
ports and offshore terminals under the jurisdiction of  
Republic of China from 1 January 2013】 .

(2). The normal training :

- i. Arrangement the courses implement for PSCO inspection on board through proficient in the international convention teaching by Senior Captain 、 Engineer 、 Surveyor and maritime lawyer.
- ii. Participating international convention courses in the seminar held by the relevant recognize organization.
- iii. Owing to the cruise ship enter the ports of Taiwan frequently, Focus to the issue of emission of Sewage from Ships, Conducting the Professional courses by Senior Captain 、 Engineer 、 Surveyor and maritime lawyer who are familiar with the Annex IV of MARPOL Regulations for the Prevention of Pollution by Sewage from Ships.
- iv. IMSBC Code Training for bulk carrier inspection: The structure and the load stability of the bulk carrier are serious effect to the safety of the ship. There are big differences in the nature of bulk material may induce serious consequence if seafarers lack or misunderstand the work of loading procedure..

Conducting the Professional courses by Senior Captain 、 Engineer 、 Surveyor and maritime lawyer who are familiar with the IMSBC Code.

- v. Connecting the Resolution A.1119(30) of IMO that

Procedures for port state control , Also including international conventions as fallow:

- a International Convention for the Safety of Life at Sea (SOLAS), 1974 as amended.
- b International Convention on Load Lines, 1966, as Amended by the Protocol of 1988.
- c International Convention for the Prevention of Pollution from Ships, 1973 as modified by the Protocol of 1978.
- d The International Convention on Standards of Training, Certification and Watch-keeping for Seafarers STCW 78.
- e International Convention on Tonnage Measurement of Ships, 1969.Tonnage 69.
- f International Convention on the Control of Harmful Anti-fouling Systems on Ships, 2001.
- g The Convention on the International Regulations for Preventing Collisions at Sea, 1972 (COLREG 1972);
- h the International Convention on Civil Liability for Oil Pollution Damage, 1969 (CLC 1969)
- i the Protocol of 1992 to amend the International Convention on Civil Liability for Oil Pollution Damage, 1969 (CLC PROT 1992)
- j the International Convention on Civil Liability for Bunker Oil Pollution Damage, 2001 (BUNKERS 2001)
- k the International Convention for the Control and Management of Ships' Ballast Water and Sediments, 2004 (BWM 2004)
- l the Nairobi International Convention on the Removal of Wrecks, 2007 (NAIROBI WRC 2007)

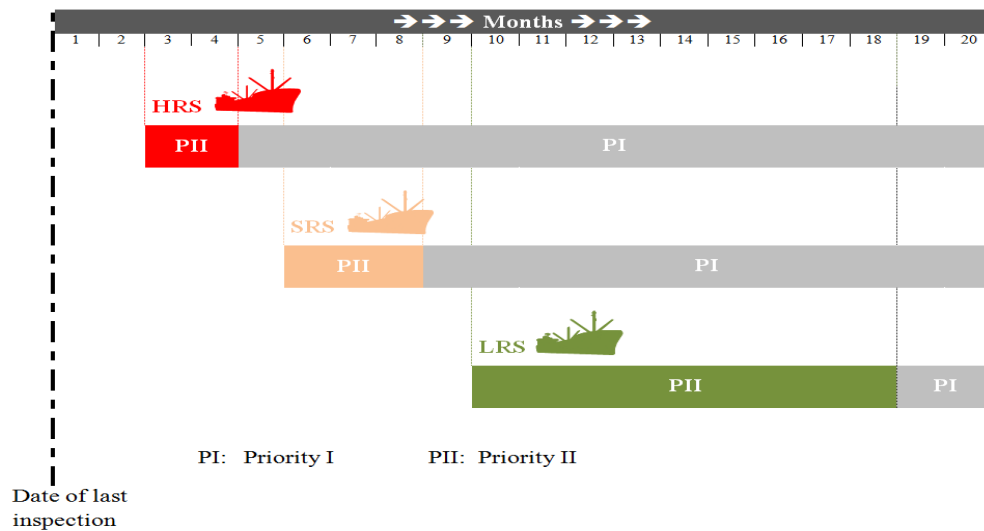
- m Resolution A.1119(30) Adopted on 6 December 2017, the Procedures for Port State Control.
  - n Tokyo Memorandum.
  - o International Safety Management Code( ISM CODE).
  - p Maritime Labour Convention, 2006,(MLC 2006).
2. Risk vessels select system set up in MTNet consistent with Tokyo MOU :

Risk vessels select system set up in MTNet refer to New inspection regime (NIR) of Tokyo MOU .The targeting of ships is based on a “Ship Risk Profile” (SRP). The SRP Calculator can be used to evaluate if a ship will be considered as High Risk Ship (HRS), Standard Risk Ship (SRS) or Low Risk Ships (LRS).

The Ship Risk Profile (SRP) is based on the following factors, using details of ship’s inspections in the last 36 months:

- (1). Type and age of ship
- (2). Number of deficiencies
- (3). Number of detentions
- (4). Performance of ship’s flag :  
 BGW list: Black-Gray-White list of flag status based on a 36 months inspection data .
- (5). Performance of the Recognised Organisation (RO): RO performance status (High,Medium,Low,Very Low) based on 36 months inspection data.
- (6). Performance of the Company responsible for the ISM Management (holder of Document of Compliance):  
 Status as High, Medium,Low and Very Low, based on 36 months inspection data.





Low Risk Ship (LRS)	9-18 months
Standard Risk Ship (SRS)	5-8 months
High Risk Ship (HRS)	2-4 months

**Table 10: Time window of PSC inspection.**

Priority I: ships must be inspected because the time window has closed.

Priority II: ships may be inspected because they are within the time window of inspection.

### 3. Human Resource of PSC :

- (1). After recruit from National Civil Service Senior Examination in 2014, There were 30 persons completed the course of IMO Model Course 3.09 so far, that means has been enhanced the human Resource of PCS in MPB.

(2). Current persons service on PSC :

- i. One qualify person in headquarter of MPB
- ii. There are 10 qualify persons service on North maritime affairs center .
- iii. There are 4 qualify persons service on Central maritime affairs center.
- iv. There are 10 qualify persons service on South maritime affairs center .
- v. There are 4 qualify persons service on South maritime affairs center .

## Conclusion

1. A Port State Control Officer (PSCO) carries out port State control inspection on board. The PSCO is a properly qualified person, authorized to carry out port State control inspections in accordance with the Commercial port law in Taiwan ROC, by the Maritime Authority of the port State and acts under its responsibility. All PSCO's carry an identity card, issued by maritime and port bureau MOTC.

PSCO should ensure effective and harmonized inspection procedures, which are followed throughout the international regulation to maintain ship and life in safety 、 preventing environment pollution as well as kept port facilities and ship in security.

Both side of Taiwan and Mainland china has been directly sail between Taiwan Strait for many years. Intent to be able to sustainable the system which communication each other for the purpose of port state control by model of MOU.

2. PSCO in Taiwan ROC, that conduct the port state control has been more than 10 years for the purpose of vessels safety 、 clean ocean as well as security of port facility and ships through serious inspection by PSCO, In the other hand make training for improving the ability and quality of PSCO are necessary.
3. Port State Control Officers should be inspected all ships owing to the Notice of 0.50% m/m sulphur content of fuel oil requirement beginning 1st January, 2019 from The Ministry of Transportation and Communications ,as well as MEPC 70 decide to "1 January 2020" as the effective date of implementation for ships to comply with global 0.50% m/m sulphur content of fuel oil requirement and adopted resolution MEPC.280(70) on

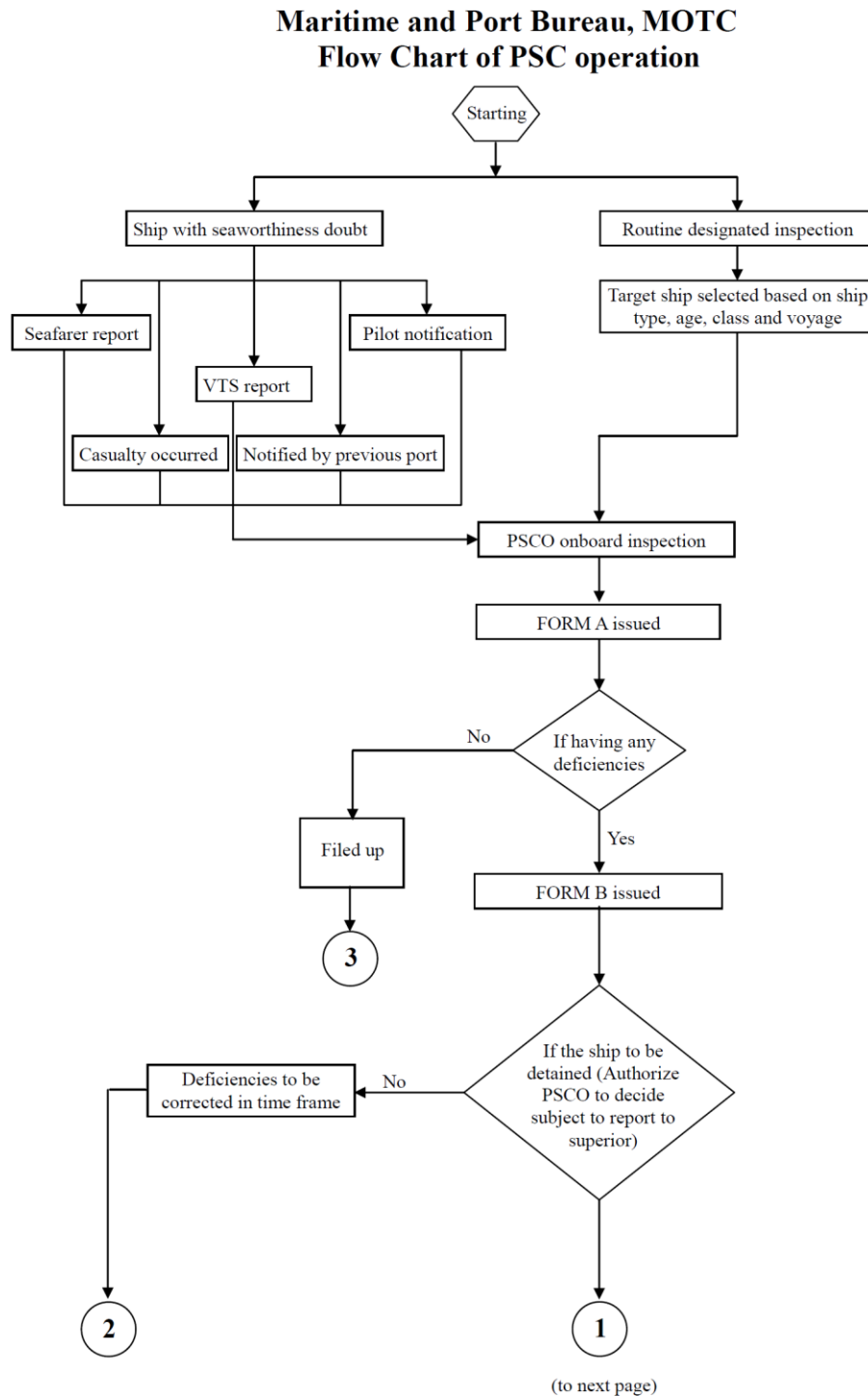
the Effective date of implementation of the fuel oil standard in regulation 14.1.3 of MARPOL Annex VI. Foreign vessels and flag ships that sailing in international routes entering into international commercial port area under the jurisdiction of the Republic of China shall utilize low sulfur fuel oil (sulfur-bearing not more than 0.5% by weight), or equipment or alternative fuels that achieve the equivalent effect of emission reduction.

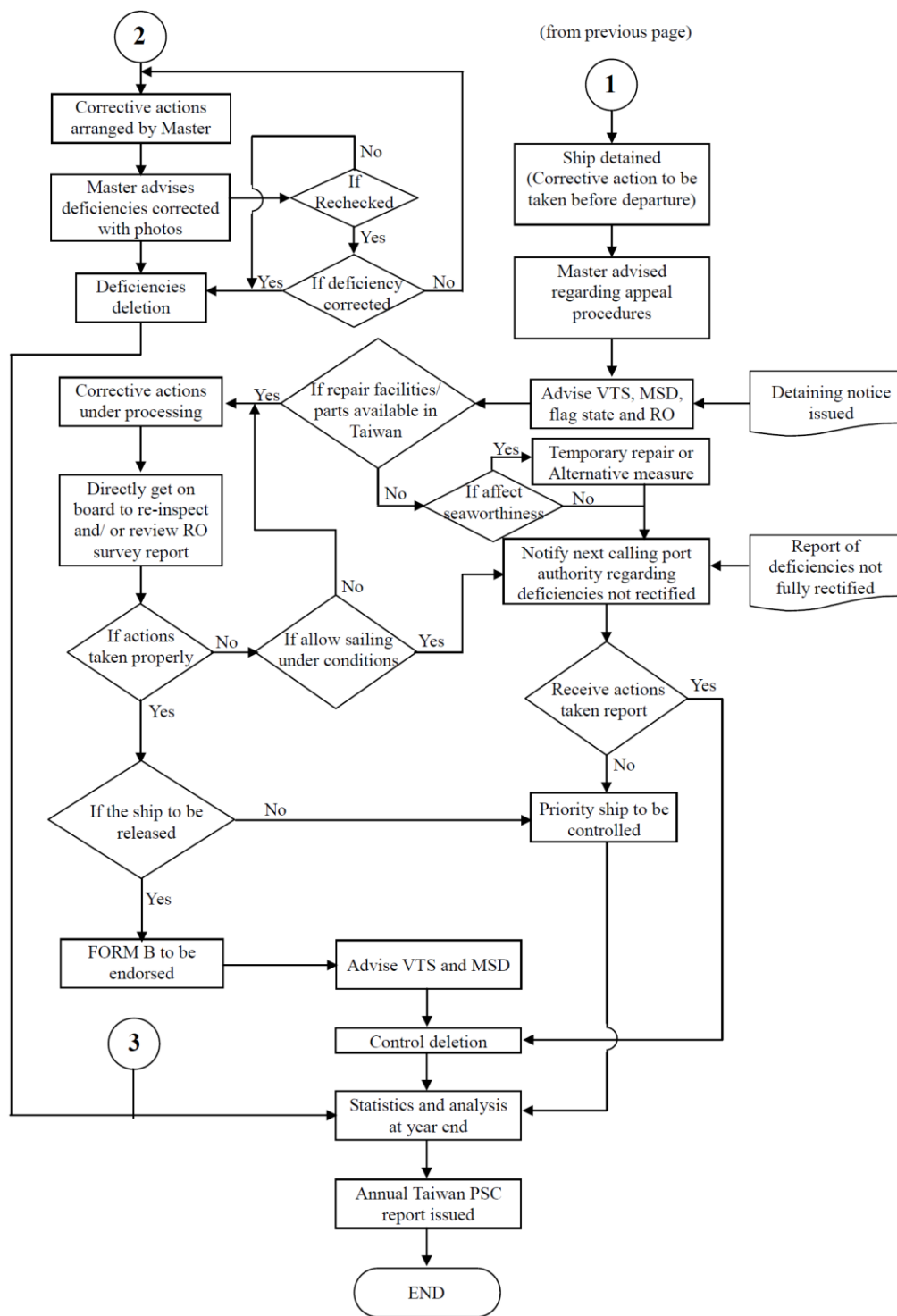
4. In order to consistent with International Convention for the Control and Management of Ships' Ballast Water and Sediments (BWM) be forced on September 2017,PSCO attend to inspection the ship which enter the port of Taiwan, as well as encourage and guide the ship owner and captain be able to implement the Self-management.
5. Recognizing that, due to the outbreak of the COVID-19,The PSCO will liberally use remote inspection techniques to verify vessel compliance . if needed, defer inspections., MPB have agreed to adopt guidance as follow for dealing with the circumstances (such as extending periods of service onboard of seafarers, delaying periods for surveys, inspections and audits, etc.) in a pragmatic and harmonized approach.
  - (1) Require PSCO attendance onboard the vessel to conduct a full or abbreviated inspection;
  - (2) Accept extending periods of service onboard of seafarers, as well as pragmatic relaxation for an appropriate grace period for delaying periods for surveys, inspections and audits given to ship by the flag State Administration and/or RO .
  - (3) Accept objective evidence such as recent classification surveys, pictures, video, vessel logs, machinery alarm reports, etc., in lieu of PSCO

attendance onboard the vessel to credit a required inspection or exam.

- (4) Defer a required inspection or exam under high risk infection by pragmatic measures.

# Appendix 1-Flow chart of PSC operation





## Appendix 2-Form-A1



FORM A  
Master

### REPORT OF INSPECTION IN ACCORDANCE WITH IMO PORT STATE CONTROL PROCEDURES\*

In accordance with the provision of paragraph 4.1 of IMO Port State Control Procedures (resolution A.1052(27))

Authority MARITIME AND PORT BUREAU, MOTC  
Address No.1, Ln.1, Sec.3, Heping E. Rd., Da'an Dist., Taipei City 10669, Taiwan (ROC)  
Telephone +886-2-8978-2900 Telefax +886-2-2705-8701  
E-mail ship@motmpb.gov.tw

1 Name of reporting authority \_\_\_\_\_ 2 Name of ship \_\_\_\_\_  
3 Flag of ship \_\_\_\_\_ 4 Type of ship \_\_\_\_\_ 5 Call sign \_\_\_\_\_  
6 IMO number \_\_\_\_\_ 7 Gross tonnage \_\_\_\_\_ 8 Deadweight \_\_\_\_\_  
9 Year of build \_\_\_\_\_ 10 Date of inspection \_\_\_\_\_ 11 Place of inspection \_\_\_\_\_  
12 Classification society \_\_\_\_\_ 13 Date of release from detention\*\* \_\_\_\_\_  
14 Particulars of ISM company (details or IMO Company Number)\*\* \_\_\_\_\_  
15 Relevant certificate(s)\*\*

a) Title	b) Issuing authority	c) Dates of issue and expiry
1		
2		
3		
4		
5		
6		
7		
8		
9		
10		
11		
12		
13		
14		

d) Information on last intermediate or annual survey\*\*

Date	Surveying authority	Place
1		
2		
3		
4		
5		
6		
7		
8		
9		
10		
11		
12		

16 Deficiencies ☐ No ☐ Yes (see attached FORM B) 17 Penalty imposed ☐ No ☐ Yes Amount  
18 Ship detained ☐ No ☐ Yes\*\*\* 19 Supporting documentation ☐ No ☐ Yes (see annex)

The statements in Form A, and Form B, if any, are recognized by the Master, \_\_\_\_\_  
Issuing office \_\_\_\_\_ Name \_\_\_\_\_ (Signature)  
(Ship Stamp)

TEL/ M.P No. \_\_\_\_\_ (duly authorized PSCO of reporting authority)

E-mail \_\_\_\_\_ Signature \_\_\_\_\_ (Stamp)

Note: This report must be retained on board of for two years and must be available for consultation by Port State Control Officers at all times.

\* This inspection report has been issued solely for the purposes of informing the master and other port States that an inspection by the port State, mentioned in the heading, has taken place. This inspection report cannot be construed as a seaworthiness certificate in excess of the certificate the ship is required to carry.

\*\* To be completed in the event of a detention.

\*\*\* Masters, shipowners and/or operators are advised that detailed information on a detention may be subject to future publication.



## Appendix 3-Form-B1



FORM B  
Master

# REPORT OF INSPECTION IN ACCORDANCE WITH IMO PORT STATE CONTROL PROCEDURES

In accordance with the provision of paragraph 4.1 of IMO Port State Control Procedures (resolution A.1052(27))

Authority MARITIME AND PORT BUREAU, MOTC  
Address No.1, Ln.1, Sec.3, Heping E. Rd., Da'an Dist., Taipei City 10669, Taiwan (ROC)  
Telephone +886-2-8978-2900 Telefax +886-2-2705-8701  
E-mail ship@motcmpb.gov.tw

2 Name of ship 6 IMO number

10	Date of inspection	11	Place of inspection
----	--------------------	----	---------------------

20 Item No.	21 Def. Code	22 Nature of deficiency <sup>2)</sup>	23 Convention <sup>3)</sup>	24 Action taken <sup>4)</sup>	25 Responsible RO <sup>3)</sup>
-------------	--------------	---------------------------------------	-----------------------------	-------------------------------	---------------------------------

[illegible]

### Deficiency Action Codes

10 Deficiency rectified  
15 Rectify deficiency at next port  
16 Rectify deficiency within 14 days  
17 Rectify deficiency before departure  
18 Rectify deficiency within 3 months  
30 Detainable deficiency  
99 Other (specify in clear text)

### PSC Inspection Action Codes

40 Next port informed  
45 Rectify detainable deficiency at next port  
50 Flag state/ consul informed  
55 Flag state consulted  
70 Recognized organization informed  
85 Investigation of contravention of discharge provisions (MARPOL)

(Stamp)

Name \_\_\_\_\_  
(duly authorized PSCO of reporting authority)

Signature \_\_\_\_\_

<sup>1)</sup> Deficiency code means Tokyo MOU Deficiency Codes.

2) This inspection was not a full survey and deficiencies listed may not be exhaustive. In the event of a detention, it is recommended that full survey is carried out and all deficiencies are rectified before an application for re-inspection is made.

3) To be completed in the event of a detention.

<sup>4)</sup> Actions taken include i.e.: ship detained/released, flag State informed, classification society informed, next port informed.

## Appendix 4- (Notificatio of release of ship)



### NOTIFICATION OF RELEASE OF SHIP

**To:** \_\_\_\_\_ Date \_\_\_\_\_  
▽ Flag State/ consulate \_\_\_\_\_ ▽ Fax no./ ▽ E-mail \_\_\_\_\_  
▽ Recognized Organization \_\_\_\_\_ ▽ Fax no./ ▽ E-mail \_\_\_\_\_

**From:**

Authority	Maritime and Port Bureau, MOTC	Fax no.	+886-2-2705-8701
Telephone	+886-2-8978-2900	E-mail	ship@motcmpb.gov.tw

Dear Sirs:

The Maritime and Port Bureau, MOTC have on (insert date) carried out a re-inspection of the following ship at (insert port), Taiwan (R.O.C).

M.V.”(insert ship name), (Flag), (IMO No.)”

The ship was released at (insert time of released) hours.

(insert of free text, if any)

Enclosed please find (a) copy(ies) of Report of Inspection of Ship.

For further enquiries, please contact us:

Yours faithfully

\_\_\_\_\_

## Appendix 5- (Notification of detention of ship)



### NOTIFICATION OF DETENTION OF SHIP

**To:** \_\_\_\_\_ **Date** \_\_\_\_\_  
▽ Flag State/ consulate \_\_\_\_\_ ▽ Fax no./ ▽ E-mail \_\_\_\_\_  
▽ Recognized Organization \_\_\_\_\_ ▽ Fax no./ ▽ E-mail \_\_\_\_\_

**From:**  
Authority Maritime and Port Bureau, MOTC Fax no. +886-2-2705-8701  
Telephone +886-2-8978-2900 E-mail ship@motcmpb.gov.tw

Dear Sirs:

The Maritime and Port Bureau, MOTC have on (insert date) carried out an inspection of the following ship at (insert port), Taiwan (R.O.C).

M.V.”(insert ship name), (Flag), (IMO No.)”

The ship is detained at (time of detention) hours due to the following detainable deficiencies:

- 1.
- 2.
- 3.
- 4.
- 5.

Enclosed please find (a) copy(ies) of Report of Inspection of Ship.

For further enquiries, please contact us:

Yours faithfully

\_\_\_\_\_

## Appendix 6-Report of deficiency



### REPORT OF DEFICIENCIES NOT FULLY RECTIFIED OR ONLY PROVISIONALLY REPAIRED

In accordance with the provision of paragraph 3.7.3 of IMO Port State Control Procedures (resolution A.1052(27))

(Copy to maritime Authority of next port of call, flag Administration, or other certifying authority as appropriate)

<b>1</b>	From (Country/region)	<b>2</b>	Port
<b>3</b>	To (Country/region)	<b>4</b>	Port
<b>5</b>	Name of ship	<b>6</b>	Date departed
<b>7</b>	Estimated place and time of arrival		
<b>8</b>	IMO number	<b>9</b>	Flag of ship and POR
<b>10</b>	Type of ship	<b>11</b>	Call sign
<b>12</b>	Gross tonnage	<b>13</b>	Year of build
<b>14</b>	Issuing authority of relevant certificate(s)		
<b>15</b>	Nature of deficiencies to be rectified	<b>16</b>	Suggested action (including action at next port of call)
<b>17</b>	Action taken		
Reporting Authority		Office	
Name		Telefax	
(duly authorized PSCO of reporting authority)			
Signature		Date	

## Appendix 7(Report of action taken to the notifying authority)



### REPORT OF ACTION TAKEN TO THE NOTIFYING AUTHORITY

In accordance with the provision of paragraph 3.7.3 of  
IMO Port State Control Procedures (resolution A.1052(27))

(by Telefax and/or Mail)

<b>1</b>	To:	Name	_____
		Position	_____
		Authority	_____
		Telephone	_____
		Telefax	_____
		E-mail	_____
		Date	_____
<b>2</b>	From:	Name	_____
		Position	_____
		Authority	_____
		Telephone	_____
		Telefax	_____
		E-mail	_____
<b>3</b>	Name of ship	_____	
<b>4</b>	Call sign	_____	
<b>5</b>	IMO Number	_____	
<b>6</b>	Port of inspection	_____	
<b>7</b>	Date of inspection	_____	
<b>8</b>	Action taken		
	a) Deficiencies	b) Action taken	
	_____	_____	
	_____	_____	
	_____	_____	
	_____	_____	
	_____	_____	
	_____	_____	
	_____	_____	
<b>9</b>	Next port	Date	_____
<b>10</b>	Supporting documentation	<input type="checkbox"/> No <input type="checkbox"/> Yes	See attached _____
		Signature	_____

## Appendix 8-e-mail and address information for Flag states of ship

RO	RO	E Mail	Address	Phone No.
ABS (America Bureau of Shipping)	美國驗船協會 臺北辦事處	abstaipei@eagle.org	<sup>10458</sup> 臺北市松江路 148 號 4 樓	(02) 25230535
DNV GL Business Assurance Co., Ltd	立恩威國際驗證股份有限公司	Service.Taiwan@dnvgl.com<Service.Taiwan@dnvgl.com>;	<sup>22046</sup> 新北市板橋區文化路二段 293 號 29 樓	(02) 82537800
DNV GL Business Assurance Co., Ltd	立恩威國際驗證股份有限公司	Service.Taiwan@dnvgl.com<Service.Taiwan@dnvgl.com>;	<sup>806</sup> 高雄市復興四路 1 號 5 樓	(07) 3387572
BV (Bureau Veritas-Registre)	法商法立德公證有限公司	Jennifer.chen@tw.bureauveritas.com	<sup>105</sup> 臺北市松山區南京東路 4 段 16 號 3	(02) 25707657
NK (Nippon Kaiji Kyokai)	日本海事協會	tp@classnk.or.jp maxihsu@classnk.or.jp	<sup>105</sup> 臺北市松江路 87 號 7 樓 G 室	(02) 25081692 25047006
CCS (China Classification Society)	中國船級社	ccs@ccs.org.cn	<sup>100007</sup> 北京市東直門 南大街 9 號船檢大樓	010- 58112811
KR (Korean Register of Shipping)	韓國驗船協會	krsiacs@krs.co.kr	36, Myeongji Ocean City 9-10 Gangseo-gu, 618-814 Rep of Korea	1566-1682, 82-70- 8799-7114

LR (Lloyd's Register)	英國勞氏驗船協會	Lloydsreg@lr.org	71 Fenchurch Street, London, EC3M 4BS, UK	
RO	RO	E Mail	Address	Phone No.
PRS(Poland Register of Shipping)	波蘭驗船協會	<a href="mailto:mailbox@prs.pl">mailbox@prs.pl</a> <a href="mailto:iacs@prs.pl">iacs@prs.pl</a>	Polski Rejestr Statkow S.A. al. Generala Jozefa Hallera 126 80-416 Gdansk Poland	58 346 17 00 58 751 11 00
RINA	義大利驗船協會	<a href="mailto:anconaced@rina.org">anconaced@rina.org</a> <a href="mailto:info@rina.org">info@rina.org</a>	Via. Sandro Totti, 3-20 piano	+39 071 4192241 +39 071 4192299
RS(Russian Register of Shipping)	俄羅斯驗船協會	<a href="mailto:pobox@rs-class.org">pobox@rs-class.org</a> <a href="mailto:international.dept@rsclass.org">international.dept@rsclass.org</a>	8, Dvortsovata Naberezhnaya, Saint-Petersburg, Russian Federation	+7812 3802072
IR(Indian Register of Shipping)	印度驗船協會	<a href="mailto:irqs@irclass.org">irqs@irclass.org</a>	52A, Adi Shankaracharya Marg. Opp. Powal Lake, Powai, Mumbai 400 072-India	+91 22 3051 9800
PSR(Panama Shipping Register)	巴拿馬驗船協會	<a href="mailto:didelpsr@panamashipping.com">didelpsr@panamashipping.com</a> <a href="mailto:didelpsr@gmail.com">didelpsr@gmail.com</a>	Wa Espana, La Cresta, Calle Gabriela Mistral Casa No. 10 Panama, Rep. De Panama	(507)263-6601 (057)263-6578
IBS(Isthmus Bureau of Shipping)	巴拿馬 IBS 驗船協會	<a href="mailto:ibs@ibs.com.pa">ibs@ibs.com.pa</a>	Williamson Place Bldg No. 0764-F, La Boca, Balboa, Panama, Rep. of Panama	(507)211-2122

## Appendix 9-Representative office in Taiwan

### Asia-Pacific

館名 (中文)	館名(外文)	姓名(英文)	地址(中文)	電話	傳真	電子郵件
澳洲辦事處	AUSTRALIAN OFFICE	REPRESENTATIVE MR. GARY RICHARD COWAN	11073 臺北市松高路 9-11 號 27-28 樓	02-8725-4100	02-8789-9599	
汶萊貿易旅遊代表處	BRUNEI DARUSSALAM TRADE AND TOURISM OFFICE	REPRESENTATIVE MRS. AINATOL ZAHAYU MOHAMMAD	10596 臺北市民生東路 3 段 129 號 4 樓 402 室	02-2712-3767	02-2712-3721	
印度台北協會	INDIA TAIPEI ASSOCIATION	DIRECTOR GENERAL MR. SRIDHARAN MADHUSUDHANAN	11012 臺北市基隆路 1 段 333 號 17 樓 1708 室	02-2757-6112	02-2757-6117	
駐台北印尼經濟貿易代表處	INDONESIAN ECONOMIC AND TRADE OFFICE TO TAIPEI	REPRESENTATIVE MR. DIDI SUMEDI	11492 臺北市瑞光路 550 號 6 樓 (倫飛大樓)	02-8752-6170	02-8752-3706	ieto@ms8.hinet.net
日本台	JAPAN-TAIWAN	CHIEF	10547 臺北市	02-	02-	ryoji-



灣交流協會—台北事務所	EXCHANGE ASSOCIATION, TAIPEI OFFICE	REPRESENTATIVE MR. MIKIO NUMATA	慶城街 28 號 (通泰商業大樓)	271 3-800 0	- 27 13 - 87 87	kl@tp.koryu.or.jp
日本台灣交流協會—高雄事務所	JAPAN-TAIWAN EXCHANGE ASSOCIATION, KAOHSIUNG OFFICE	DIRECTOR GENERAL MR. KINZO NAKAGUN	80272 高雄市苓雅區和平一路 87 號 9 樓	07-771 - 400 8	07 - 77 1- 27 34	
吉里巴斯共和國大使館	EMBASSY OF KIRIBATI	H. E. AMBASSADOR TESSIE ERIA LAMBOURNE	11157 臺北市天母西路 62 巷 9-1 號 10 樓	02-287 6-904 2	02 - 28 76 - 49 83	eataip ei@mfa.gov.ki
馬來西亞友誼及貿易中心	MALAYSIAN FRIENDSHIP AND TRADE CENTRE, TAIPEI	PRESIDENT MS. SWEE PENG SHARON HO	10595 臺北市敦化北路 102 號 8 樓 (三和塑膠大樓)	02-271 3-262 6	02 - 25 14 - 98 64	mwtaip ei@kln.gov.my
馬紹爾群島共和國大使館	EMBASSY OF THE REPUBLIC OF THE MARSHALL ISLANDS	H. E. AMBASSADOR NEIJON REMA EDWARDS	11157 臺北市天母西路 62 巷 9-1 號 4 樓	02-287 3-488 4	02 - 28 73 - 49 04	rmiemb .tw@gmail.com
緬甸聯邦共和國駐台北貿易辦事處	MYANMAR TRADE OFFICE (TAIPEI), THE REPUBLIC OF THE UNION OF	TRADE REPRESENTATIVE MR. MYO THET	11568 臺北市南港區經貿二路 188 號 6 樓	02-278 9-210 0#1	02 - 27 89 -	mto.ta ipei.tw@gmail.com

	MYANMAR			01	16 70	
諾魯共和國大使館	EMBASSY OF THE REPUBLIC OF NAURU	H. E. AMBASSADOR CHITRA JEREMIAH	11157 臺北市 天母西路 62 巷 9-1 號 11 樓	02- 287 6- 195 0	02 - 28 76 - 19 30	embass y@naur u.org. tw
紐西蘭 商工辦 事處	NEW ZEALAND COMMERCE AND INDUSTRY OFFICE	DIRECTOR MS. MOIRA MCDONALD TURLEY	11047 臺北市 松智路 1 號 9 樓	02- 272 0- 522 8	02 - 27 20 - 52 55	nzcio. tpe@ms a.hine t.net
帛琉共和國大使館	EMBASSY OF THE REPUBLIC OF PALAU	H. E. AMBASSADOR DILMEI LOUISA OLKERIIL	11157 臺北市 天母西路 62 巷 9 號 5 樓	02- 287 6- 541 5	02 - 28 76 - 04 36	palau. embass y.taip ei@gma il.com
巴布亞 紐幾內 亞駐臺 商務代 表處	PAPUA NEW GUINEA TRADE OFFICE IN TAIWAN	REPRESENTA TIVE MR. TOMMY KAMBU KUNJI	11010 臺北市 信義區松仁路 3 號 4 樓 412 室	02- 878 9- 705 5	02 - 87 89 - 70 58	pngtra deoffi cetaip ei@gma il.com
馬尼拉 經濟文 化辦事 處	MANILA ECONOMIC AND CULTURAL OFFICE	RESIDENT REPRESENTA TIVE MR. ANGELITO T. BANAYO	10493 臺北市 內湖區洲子街 55&57 號 2 樓	02- 265 8- 882 5	02 - 26 58 - 88 67	meco. t pe@msa .hinet .net
馬尼拉	MANILA	DIRECTOR,	80761 高雄市	07-	07	

經濟文化辦事處—高雄分處	ECONOMIC AND CULTURAL OFFICE, KAOHSIUNG EXTENSION OFFICE	KAOHSIUNG OFFICE MS. IRENE S. NG	三民區民族一路 80 號 9 樓之 2	398 — 593 5~ 6	— 39 8— 59 29	
馬尼拉經濟文化辦事處—台中分處	MANILA ECONOMIC AND CULTURAL OFFICE, TAICHUNG EXTENSION OFFICE	DIRECTOR, TAICHUNG OFFICE MR. SERGIO TAN EULOGIO	40354 臺中市西區臺灣大道二段 220 號 20 樓(龍邦世貿大樓 B 棟)	04— 232 2— 883 5— 36	04 — 23 22 — 89 92	
駐臺北韓國代表部	KOREAN MISSION IN TAIPEI	REPRESENTATIVE MR. YANG CHANG-SOO	11012 臺北市基隆路 1 段 333 號 15 樓 1506 室	02— 275 8— 832 0~ 25	02 — 27 57 — 70 06	taipei@mofa.go.kr
新加坡駐台北商務辦事處	SINGAPORE TRADE OFFICE IN TAIPEI	TRADE REPRESENTATIVE MR. WONG WIE KUEN	10688 臺北市仁愛路 4 段 85 號 9 樓	02— 277 2— 194 0	02 — 27 11 — 73 83	singtr_tpe@mfa.sg
索羅門群島大使館	EMBASSY OF SOLOMON ISLANDS	H. E. AMBASSADOR JOSEPH WALEANISIA	11157 臺北市天母西路 62 巷 9 號 7 樓	02— 287 3— 116 8	02 — 28 73 — 52 24	embassy@solomonsonline.org.tw
泰國貿易經濟辦事處	THAILAND TRADE AND ECONOMIC OFFICE	THONGCHAI CHASAWATH	10459 臺北市松江路 168 號 12 樓	02— 258 1— 197	02 — 25 81	info@tteo.tw

				9	– 87 07	
吐瓦魯 國大使 館	EMBASSY OF TUVALU	H. E. AMBASSADOR LIMASENE TEATU	11157 臺北市 天母西路 62 巷 9-1 號 9 樓	02– 287 676 06	02 – 28 76 76 03	tuvalu embass yrocc@g mail.c om
駐台北 越南經 濟文化 辦事處	VIETNAM ECONOMIC AND CULTURAL OFFICE IN TAIPEI	DIRECTOR MR. NGUYEN ANH DUNG	10455 臺北市 松江路 65 號 3 樓	02– 251 6– 662 6	02 – 25 16 – 66 25	

## West of Asia

館名(中文)	館名 EMBASSY ( English)	姓名 Name (English)	地址(中文)	電話 (Tel)	傳真 (Fax)	電子郵件 (e mail)
駐台北以色列經濟文化辦事處	ISRAEL ECONOMIC AND CULTURAL OFFICE IN TAIPEI	REPRESENTATIVE MR. ASHER YARDEN	11012 臺北市基隆路 1 段 333 號 24 樓 2408 室	02 - 2757 - 9692	02 - 2757 - 7247	駐台北以色列經濟文化辦事處
約旦商務辦事處	THE JORDANIAN COMMERCIAL OFFICE	DIRECTOR MR. QUSSAI ABDULL-HAMEED YAKOUB BANI-MUSTAFA	11148 臺北市忠誠路 2 段 110 號 1 樓	02 - 2871 - 7712	02 - 2872 - 1176	約旦商務辦事處
駐台北烏蘭巴托貿易經濟代表處	ULAANBAATAR TRADE AND ECONOMIC REPRESENTATIVE OFFICE IN TAIPEI	REPRESENTATIVE MR. ZOLZAYA LKHAGVASUREN	11012 臺北市基隆路 1 段 333 號 11 樓 1112 室	02 - 2722 - 9740	02 - 2722 - 9745	駐台北烏蘭巴托貿易經濟代表處
阿曼王國駐華商務辦事處	COMMERCIAL OFFICE OF THE SULTANATE OF OMAN-TAIWAN	DIRECTOR MR. SULAIMAN SULTAN SALIM AL MUGHAIRY	11011 臺北市信義路 5 段 5 號 世貿中心 7G-05 室	02 - 2722 - 0684	02 - 2722 - 0645	阿曼王國駐華商務辦事處
莫斯科	REPRESENTATIVE	REPRESENT	11049	02	02	莫斯科

台北經濟文化協調委員會駐台北代表處	OFFICE IN TAIPEI FOR THE MOSCOW-TAIPEI COORDINATION COMMISSION ON ECONOMIC AND CULTURAL COOPERATION	IVE MR. SERGEY PETROV	臺北市信義路5段2號9樓	- 87 80 - 30 11	- 87 80 - 25 11	台北經濟文化協調委員會駐台北代表處
沙烏地阿拉伯商務辦事處	SAUDI ARABIAN TRADE OFFICE	REPRESENTATIVE DR. RAFAT AHMED KHALEEL AL SAYED	11157 臺北市天母西路62巷9號4樓	02 - 28 76 - 14 44	02 - 28 76 - 16 14	沙烏地阿拉伯商務辦事處
駐台北土耳其貿易辦事處	TURKISH TRADE OFFICE IN TAIPEI	REPRESENTATIVE MR. MURAT BAKLACI	11012 臺北市基隆路1段333號19樓1905室	02 - 27 57 - 61 15	02 - 27 57 - 94 32	駐台北土耳其貿易辦事處

## Africa region

館名(中文)	館名 EMBASSY (English)	姓名 Name (English)	地址(中文)	電話 (Tel)	傳真 (FAX)	電子郵件(e mail)
史瓦帝尼王國大使館	EMBASSY OF THE KINGDOM OF ESWATINI	H. E. AMBASSADOR THAMIE DLAMINI	11157 臺北市天母西路62巷9號10樓	02-287 2-593 4	02-287 2-651 1	史瓦帝尼王國大使館
奈及利亞駐華商務辦事處	NIGERIA TRADE OFFICE IN TAIWAN, R. O. C.	TRADE COMMISSIONER IBRAHIM AKOPARI AHMED	22043 新北市板橋區雙十路2段48號12樓	02-225 011 18	02-225 011 17	奈及利亞駐華商務辦事處
南非聯絡辦事處	LIAISON OFFICE OF THE	REPRESENTATIVE MR.	10595 臺北市敦化北路	02-271	02-271	南非聯絡辦事處

處	REPUBLIC OF SOUTH AFRICA	ROBERT SERAKI MATSEBE	205 號 13 樓 1301 室	5- 229 5	2- 510 9	處
---	-----------------------------	-----------------------------	----------------------	----------------	----------------	---

## Europe

館名(中文)	館名 EMBASSY ( English)	姓名 Name (English)	地址(中文)	電話 (Tel)	傳真 (FAX)	電子郵件(e mail )
奧地利 台北辦事處	AUSTRIAN OFFICE TAIPEI	DIRECTOR MR. ROLAND RUDORFER	10549 臺 北市敦化 北路 167 號 10 樓	02 - 81 75 - 32 83	02 - 25 14 - 99 80	taipei- ot@bmeia.gv.at
奧地利 商務代表辦事處	AUSTRIAN COMMERCIAL OFFICE	DIRECTOR MR. CHRISTIAN FUCHSSTEIN ER	10595 臺 北市敦化 北路 205 號 6 樓 608 室	02 - 27 15 - 52 20	02 - 27 17 - 32 42	taipei@advantageaustria.org
比利時 台北辦事處	BELGIAN OFFICE, TAIPEI	DIRECTOR MR. RIK VAN DROOGENBRO ECK	10596 臺 北市民生 東路 3 段 131 號 601 室	02 - 27 15 - 12 15	02 - 27 12 - 62 58	taipei@diplobel.fed .be
捷克經 濟文化 辦事處	CZECH ECONOMIC AND CULTURAL OFFICE	REPRESENTATIVE MR. PATRICK RUMLAR	11071 臺 北市基隆 路 1 段 200 號 7 樓 B 室	02 - 27 22 - 51 00	02 - 27 22 - 12 70	Taipei_Ceco@mzv.cz
丹麥商 務辦事處	THE TRADE COUNCIL OF	DIRECTOR MR.	10595 臺 北市敦化	02 -	02 -	tpehkt@um.dk



處	DENMARK, TAIPEI	NICHOLAS ENERSEN	北路 205 號 12 樓 1207 室	27 18 – 21 01	27 18 – 21 41	
歐洲經 貿辦事 處	EUROPEAN ECONOMIC AND TRADE OFFICE	HEAD OF OFFICE MS. ANNA MARIA MADELEINE MAJORENKO	11012 臺 北市基隆 路 1 段 333 號 16 樓 1603 室	02 – 27 57 – 72 11	02 – 27 57 – 72 09	admin- taiwan@eeas.europa. eu
芬蘭商 務辦事 處	FINLAND TRADE CENTER	REPRESENTA TIVE MR. JARI TAPANI SEILONEN	11071 台 北市信義 區忠孝東 路四段 560 號 13 樓	02 – 87 29 – 12 31	02 – 87 29 – 12 11	taiwan@finpro.fi、 Jari.Seilonen@finpr o.fi
法國在 台協會	FRENCH OFFICE IN TAIPEI	DIRECTOR MR. BENOIT JEAN MARIE VINCENT GUIDEE	10595 臺 北市敦化 北路 205 號 10 樓 1003 室	02 – 35 18 – 51 51	02 – 35 18 – 51 89	presse@france- taipei.org
德國在 台協會	GERMAN INSTITUTE TAIPEI	DIRECTOR GENERAL DR. THOMAS HEINRICH PRINZ	11049 臺 北市信義 路 5 段 7 號 33 樓	02 – 87 22 – 28 00	02 – 81 01 – 62 82	info@taipei.diplo.d e
德國經 濟辦事 處	GERMAN TRADE OFFICE TAIPEI	EXECUTIVE DIRECTOR MR. AXEL HEINRICH FRITZ	11012 臺 北市基隆 路 1 段 333 號 19 樓之 9	02 – 87 58 –	02 – 87 58 –	info@taiwan.ahk.de

		LIMBERG		58 00	58 33	
歌德學院（台北）德國文化中心	GOETHE- INSTITUT TAIPEI	DIRECTOR MR. JENS ROESLER	10078 臺 北市和平 西路 1 段 20 號 12 樓	02 - 23 65 - 72 94	02 - 23 68 - 75 42	
教廷大使館	APOSTOLIC NUNCIATURE	CHARGE D' AFFAIRES A. I. MONSIGNOR SLADAN Ć OSIĆ	10667 臺 北市和平 東路 2 段 265 巷 7-1 號 1 樓	02 - 27 00 - 68 47	02 - 27 55 - 19 26	na. taipei@diplomat. va
匈牙利貿易辦事處	HUNGARIAN TRADE OFFICE	REPRESENTA TIVE MR. JANOS FERENC ALBERT	10462 臺 北市敬業 一路 97 號 3 樓	02 - 85 01 - 12 00 ~2	02 - 85 01 - 11 61	mission. tpe@mfa.gov . hu
義大利經濟貿易文化推廣辦事處	ITALIAN ECONOMIC, TRADE AND CULTURAL PROMOTION OFFICE	REPRESENTA TIVE MR. DAVIDE GIGLIO	11012 臺 北市基隆 路 1 段 333 號 18 樓 1808 室	02 - 23 45 - 03 20	02 - 27 57 - 62 60	segreteria. taipei@e steri. it
盧森堡台北辦事處	LUXEMBOURG TRADE AND INVESTMENT OFFICE, TAIPEI	DIRECTOR MS. TANIA BERCHEM	11012 台 北市信義 區基隆路 一段 333 號 18 樓 1812 室	02 - 27 57 - 60 07	02 - 27 57 - 60 02	assistant@luxtrade. org. tw

波蘭臺北辦事處	POLISH OFFICE IN TAIPEI	DIRECTOR GENERAL DR. MACIEJ ARTUR GACA	11012 臺 北市基隆 路 1 段 333 號 16 樓 1601 室	02 - 77 18 - 33 00	02 - 77 18 - 33 09	taipei.warsaw.office@msz.gov.pl
斯洛伐克經濟文化辦事處	SLOVAK ECONOMIC AND CULTURAL OFFICE, TAIPEI	REPRESENTATIVE MR. MARTIN PODSTAVEK	11012 臺 北市基隆 路 1 段 333 號 12 樓 1203 室	02 - 87 80 - 32 31	02 - 27 23 - 50 96	seco.taipei@mzv.sk
西班牙商務辦事處	SPANISH CHAMBER OF COMMERCE	DIRECTOR GENERAL MR. JOSE LUIS ECHANIZ COBAS	10478 臺 北市民生 東路 3 段 49 號 10 樓 B1 室	02 - 25 18 - 49 05	02 - 25 18 - 48 91	taipei@comercio.mineco.es
瑞典貿易暨投資委員會台北辦事處	THE SWEDISH TRADE & INVEST COUNCIL	REPRESENTATIVE MR. HAKAN JEVRELL	11012 臺 北市基隆 路 1 段 333 號 24 樓 2406 室	02 - 27 57 - 65 73	02 - 27 57 - 67 23	taipei@business-sweden.se(Trade section) taipei_consular@business-sweden.se(Consular section)
瑞士商務辦事處	TRADE OFFICE OF SWISS INDUSTRIES	DIRECTOR MR. ROLF URS FREI	11012 臺 北市基隆 路 1 段 333 號 31 樓 3101 室	02 - 27 20 - 10 01	02 - 27 57 - 69 84	tai.vertretung@eda.admin.ch
荷蘭貿易暨投資辦事處	NETHERLANDS TRADE AND	REPRESENTATIVE MR. GUY	11073 臺 北市松高 路 1 號 13	02 - 87	02 - 27	ntio@ntio.org.tw

處	INVESTMENT OFFICE	ALEXANDER WITTICH	樓之 2	58 – 72 00	20 – 50 05	
英國在 台辦事 處	BRITISH OFFICE	REPRESENTA TIVE MS. CATHERINE ELIZABETH NETTLETON	11073 臺 北市松高 路 9-11 號 26 樓（統 一國際大 樓）	02 – 87 58 – 20 88	02 – 87 58 – 20 50	

## North America

館名(中 文)	館名 EMBASSY ( English)	姓名 Name (English)	地址(中文)	電 話 (Te 1)	傳 真 (FA X)	電子郵件(e mail )
加拿大 駐台北 貿易辦 事處	CANADIAN TRADE OFFICE IN TAIPEI	EXECUTIVE DIRECTOR MR. JORDAN J. REEVES	11047 臺 北市松智 路 1 號 6 樓	02- 872 3- 300 0	02- 872 3- 309 2	
美國在 台協會 —台北 辦事處	AMERICAN INSTITUTE IN TAIWAN, TAIPEI OFFICE	DIRECTOR MR. WILLIAM BRENT CHRISTENSE N	10659 臺 北市信義 路 3 段 134 巷 7 號	02- 216 2- 200 0	02- 216 2- 225 1	media@mail. ait.org.tw ; aitirc@mail .ait.org.tw
美國在 台協會 —高雄 分處	AMERICAN INSTITUTE IN TAIWAN, KAOHSIUNG BRANCH OFFICE	BRANCH CHIEF MR. MATTHEW EUGENE O” CONNOR	80661 高 雄市前鎮 區成功二 路 88 號 5 樓	07- 335 – 500 6	07- 338 – 055 1	

## Latin America and the Caribbean

館名(中文)	館名 EMBASSY ( English)	姓名 Name (English)	地址(中文)	電話 (Tel )	傳 真 (FA X)	電子郵件 (e mail )
阿根廷 商務文 化辦事 處	ARGENTINA TRADE AND CULTURAL OFFICE	DIRECTOR MR. MIGUEL ALFREDO VELLOSO	11012 臺北市 基隆路 1 段 333 號 15 樓 1512 室.	02- 275 7- 655 6	02 - 27 57 - 64 45	atc0326 @ms13.h inet.ne t
貝里斯 大使館	EMBASSY OF BELIZE	H. E. AMBASSADOR DIANE HAYLOCK	11157 臺北市 天母西路 62 巷 9 號 11 樓	02- 287 6- 089 4	02 - 28 76 - 08 96	embassy bzroc@g mail.co m
巴西商 務辦事 處	COMMERCIAL OFFICE OF BRAZIL TO TAIPEI	DIRECTOR MR. LINCOLN BERNARDES JUNIOR	11158 臺北市 德行西路 45 號 2 樓	02- 283 5- 738 8	02 - 28 35 - 71 21	
智利商 務辦事 處	CHILEAN TRADE OFFICE	DIRECTOR MR. AGUSTIN ALEJANDRO CASES NARDOCCI	11011 臺北市 信義路 5 段 5 號 7B-06 室	02- 272 3- 032 9	02 - 27 23 - 03 18	yhuang@ prochil e.gob.c l
瓜地馬 拉共和 國大使 館	EMBASSY OF THE REPUBLIC OF GUATEMALA	H. E. AMBASSADOR OLGA MARIA AGUJA	11157 臺北市 天母西路 62 巷 9-1 號 3 樓	02- 287 5- 695	02 - 28 74	embchin a@minex .gob.gt

		ZUNIGA		2	- 06 99	
海地共和國大使館	EMBASSY OF THE REPUBLIC OF HAITI	H. E. AMBASSADOR RACHEL COUPAUD	11157 臺北市 天母西路 62 巷 9-1 號 8 樓	02- 287 6- 671 8	02- - 28 76 - 67 19	haiti@ms26.hinet.net
宏都拉斯共和國大使館	EMBASSY OF THE REPUBLIC OF HONDURAS	H. E. AMBASSADOR RAFAEL FERNANDO SIERRA QUESADA	11157 臺北市 天母西路 62 巷 9 號 9 樓	02- 287 5- 550 7	02- - 28 75 - 57 26	embajadahondurastw@yahoo.com
墨西哥商務簽證文件暨文化辦事處	MEXICAN TRADE SERVICES DOCUMENTATION AND CULTURAL OFFICE	MR. MARTIN TORRES GUTIERREZ RUBIO	11012 臺北市 基隆路 1 段 333 號 15 樓 1501, 1502, 1514 室	02- 275 7- 656 6	02- - 27 58 - 46 51	mexico@ofmex.tw
墨西哥商務辦事處	MEXICAN TRADE SERVICES	TRADE COMMISSIONER MR. ARI BEN SAKS GONZALEZ	11012 臺北市 基隆路 1 段 333 號 29 樓 2905 室	02- 275 7- 652 6	02- - 27 57 - 61 80	taiwan@promexico.gob.mx
尼加拉瓜共和國大使館	EMBASSY OF THE REPUBLIC OF NICARAGUA	H. E. AMBASSADOR WILLIAM MANUEL TAPIA ALEMAN	11157 臺北市 天母西路 62 巷 9 號 3 樓	02- 287 4- 903 4	02- - 28 74 - 90 80	

巴拉圭 共和國 大使館	EMBASSY OF THE REPUBLIC OF PARAGUAY	H. E. AMBASSADOR MARCIAL BOBADILLA GUILLEN	11157 臺北市 天母西路 62 巷 9-1 號 7 樓	02- 287 3- 631 0/1 1	02 - 28 73 - 63 12	embapar taiwan@ embapar twroc.c om.tw
秘魯駐 臺北商 務辦事 處	COMMERCIAL OFFICE OF PERU IN TAIPEI	DIRECTOR MR. JUAN LUIS KUYENG RUIZ	11012 臺北市 基隆路 1 段 333 號 16 樓 1613 室	02- 275 7- 701 7	02 - 27 57 - 64 80	postmas ter@per u.org.t w
聖克里 斯多福 及尼維 斯大使 館	EMBASSY OF SAINT CHRISTOPHER AND NEVIS	H. E. AMBASSADOR JASMINE ELISE HUGGINS	11157 臺北市 天母西路 62 巷 9-1 號 5 樓	02- 287 3- 325 2	02 - 28 73 - 32 46	embskn. tw@mofa .gov.kn
聖露西 亞大使 館	EMBASSY OF SAINT LUCIA	H. E. AMBASSADOR EDWIN LAURENT	11157 臺北市 士林區天母西 路 62 巷 9 號 6 樓	02- 287 2- 095 0	02 - 28 72 - 08 70	sluemba ssy.tw@ gmail.c om